

---

The following maps show the areas proposed for critical habitat designation for the southwestern willow flycatcher and the areas being consider for exclusion from the designation. The maps are provided as supplemental information for the proposed rule.

The proposed rule published in the *Federal Register*, August 15, 2011, (Docket No. FWS-R2-ES-2011-0053) and is available at [www.regulations.gov](http://www.regulations.gov).

The first map is an overview, and the following 29 maps are organized by Management Unit in alphabetical order.

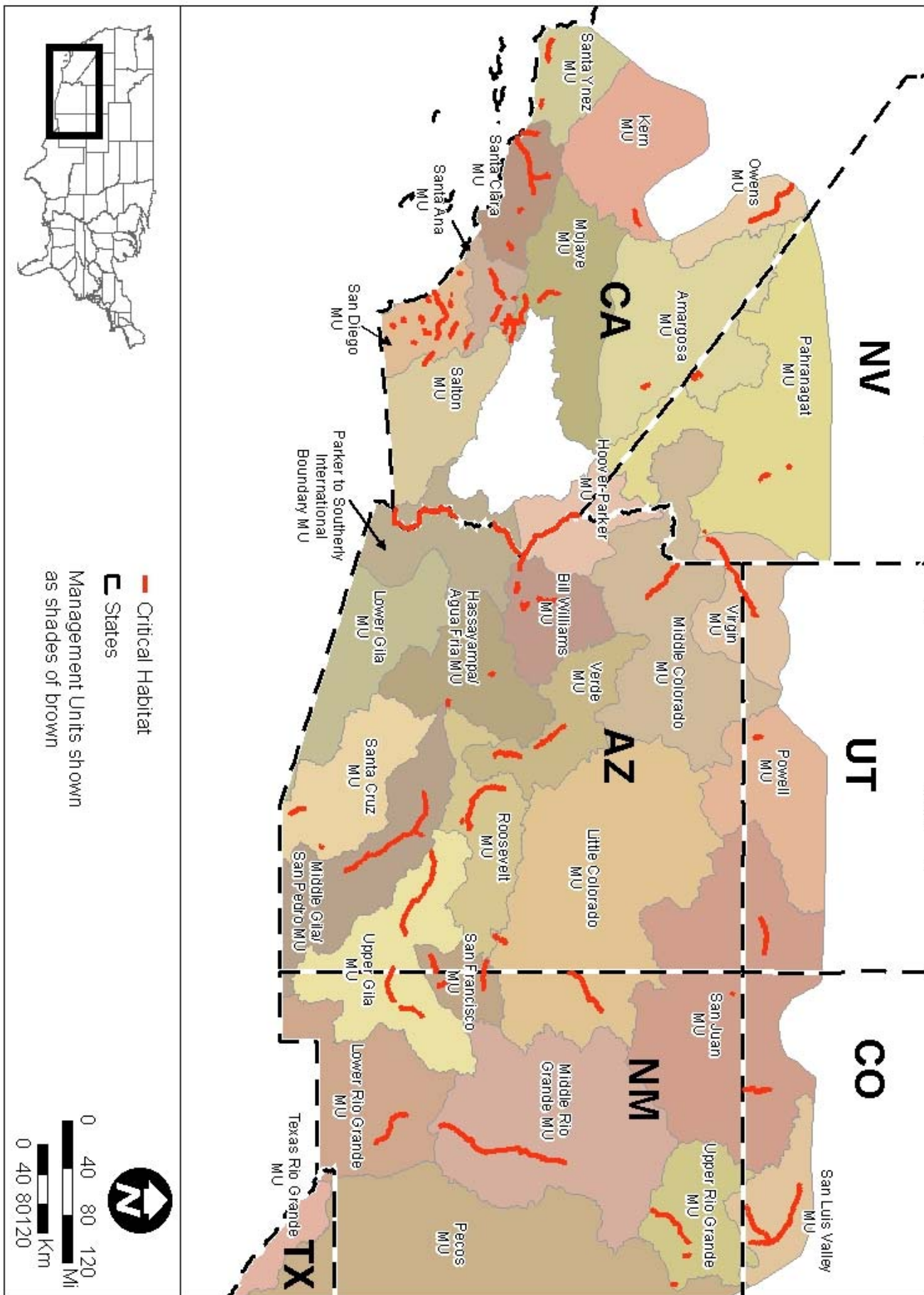
You can download additional versions of these maps in higher resolution .jpg file formats at the website below. You can also download data files in ARC GIS format at this website.

<http://www.fws.gov/southwest/es/arizona/southwes.htm>

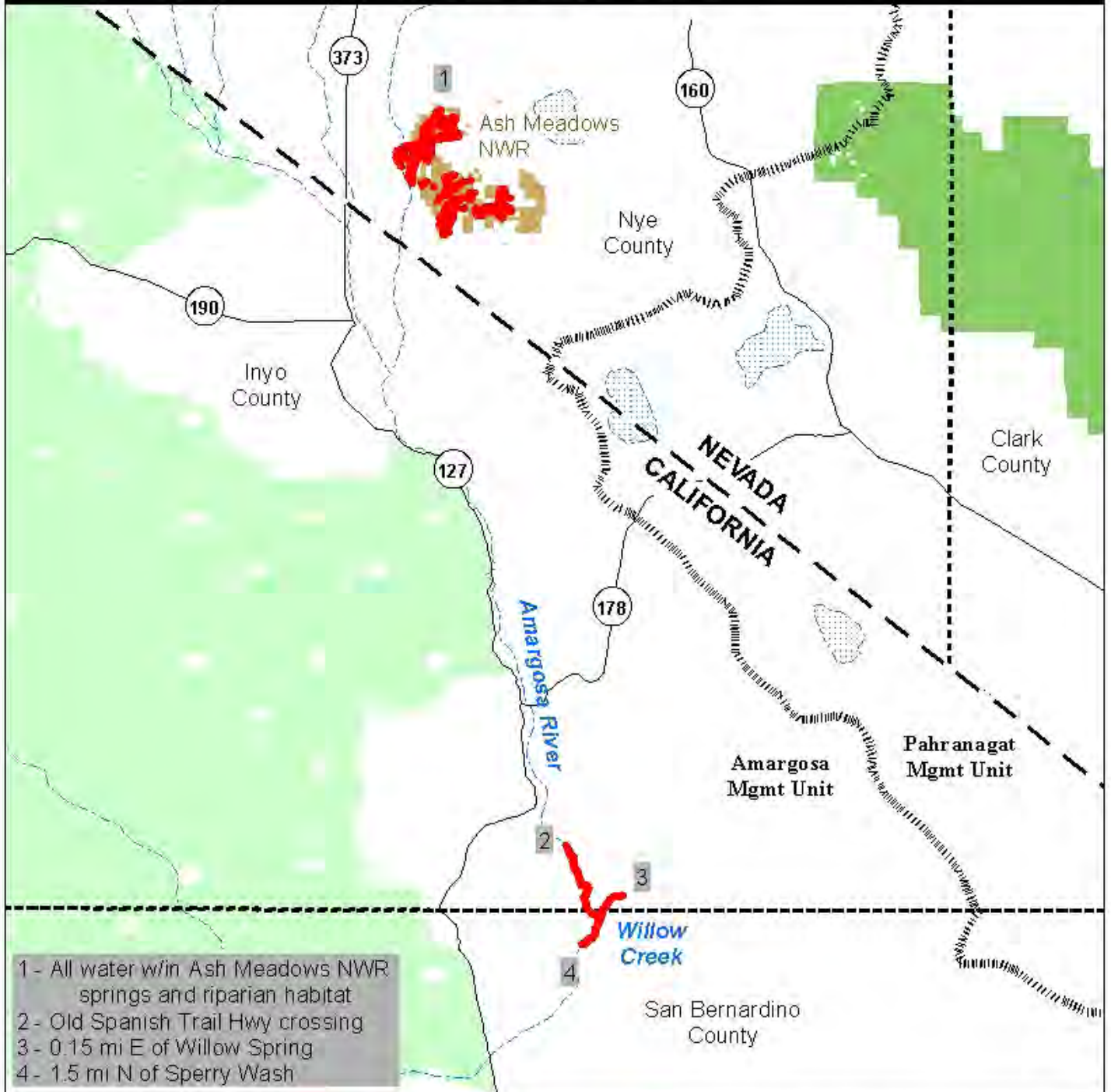
Other references and information about the flycatcher can also be obtained at this webpage.

---

General Locations of Critical Habitat for the Southwestern Willow Flycatcher



### General Locations of Critical Habitat for the Southwestern Willow Flycatcher Amargosa Management Unit



- 1 - All water w/in Ash Meadows NWR springs and riparian habitat
- 2 - Old Spanish Trail Hwy crossing
- 3 - 0.15 mi E of Willow Spring
- 4 - 1.5 mi N of Sperry Wash

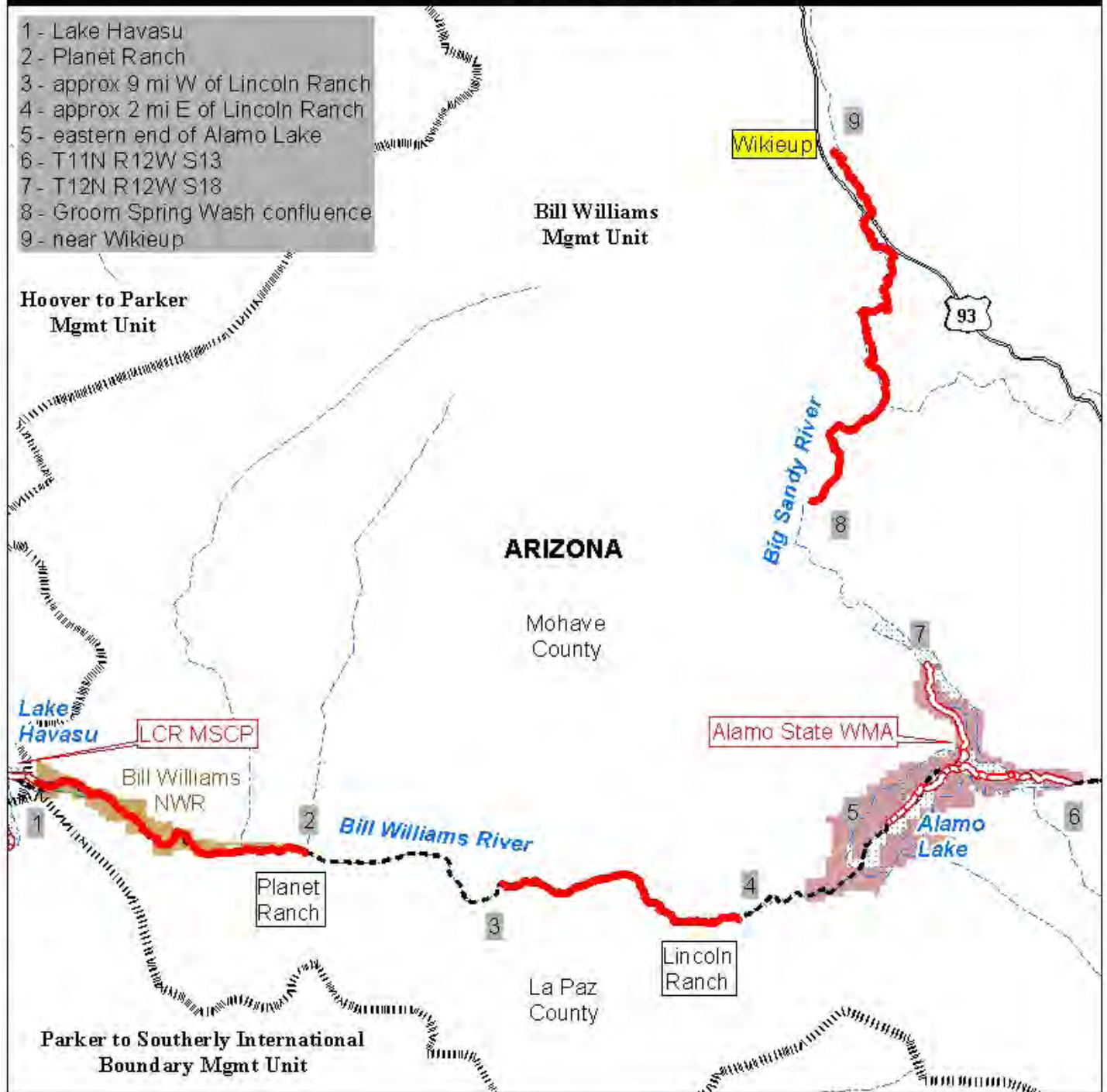


- Critical Habitat
- Considered for Exclusion
- Management Units
- States
- Counties
- State Highways
- Rivers
- Lakes
- Department of Defense
- Fish and Wildlife Service
- Forest Service
- National Park Service
- State
- Tribal



## General Locations of Critical Habitat for the Southwestern Willow Flycatcher Bill Williams Management Unit

- 1 - Lake Havasu
- 2 - Planet Ranch
- 3 - approx 9 mi W of Lincoln Ranch
- 4 - approx 2 mi E of Lincoln Ranch
- 5 - eastern end of Alamo Lake
- 6 - T11N R12W S13
- 7 - T12N R12W S18
- 8 - Groom Spring Wash confluence
- 9 - near Wikieup



- |                          |                           |
|--------------------------|---------------------------|
| Critical Habitat         | Department of Defense     |
| Considered for Exclusion | Fish and Wildlife Service |
| Counties                 | Forest Service            |
| US Highways              | National Park Service     |
| Rivers                   | State                     |
| Management Units         | Tribal                    |

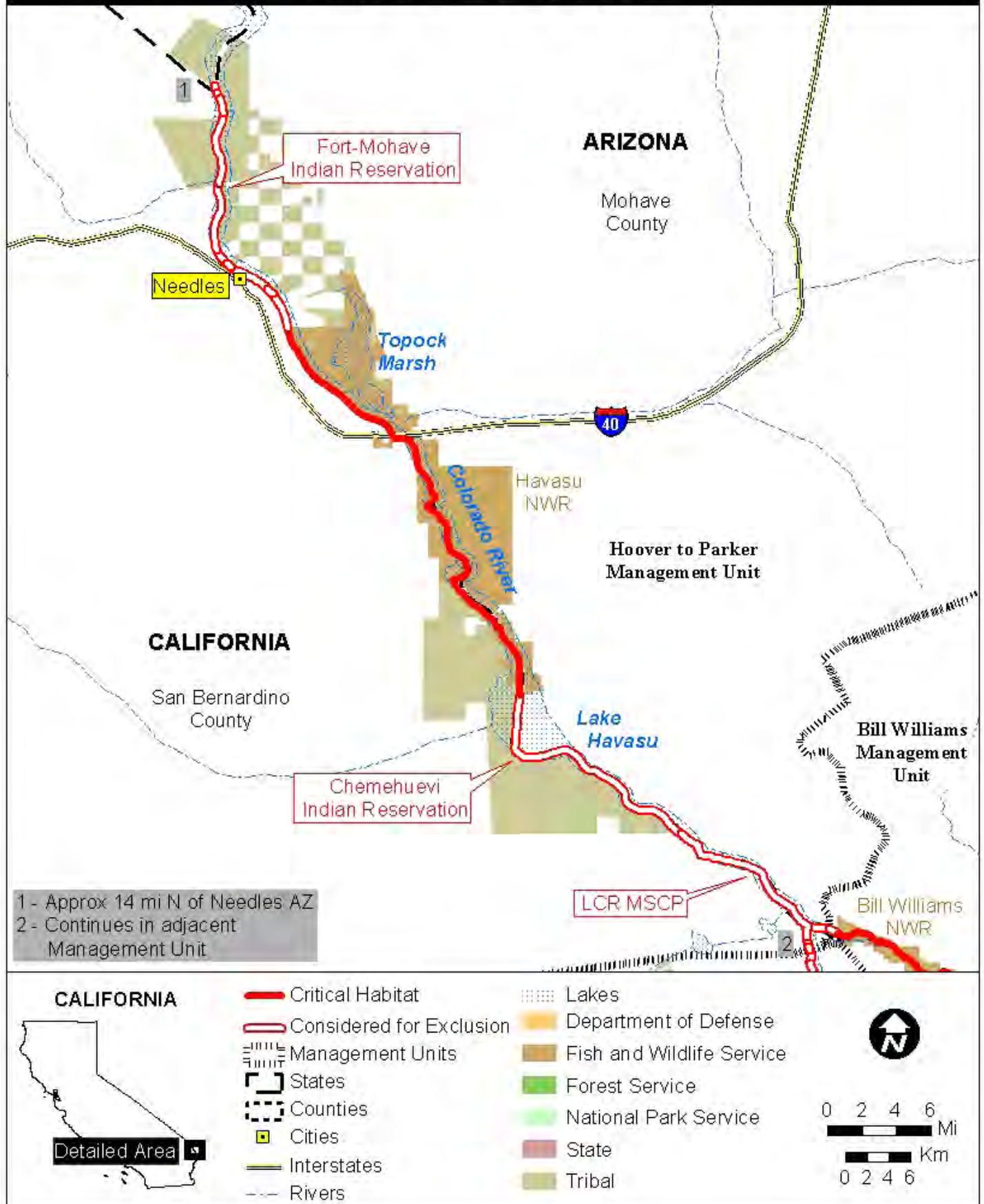


## General Locations of Critical Habitat for the Southwestern Willow Flycatcher Hassayampa / Agua Fria Management Unit

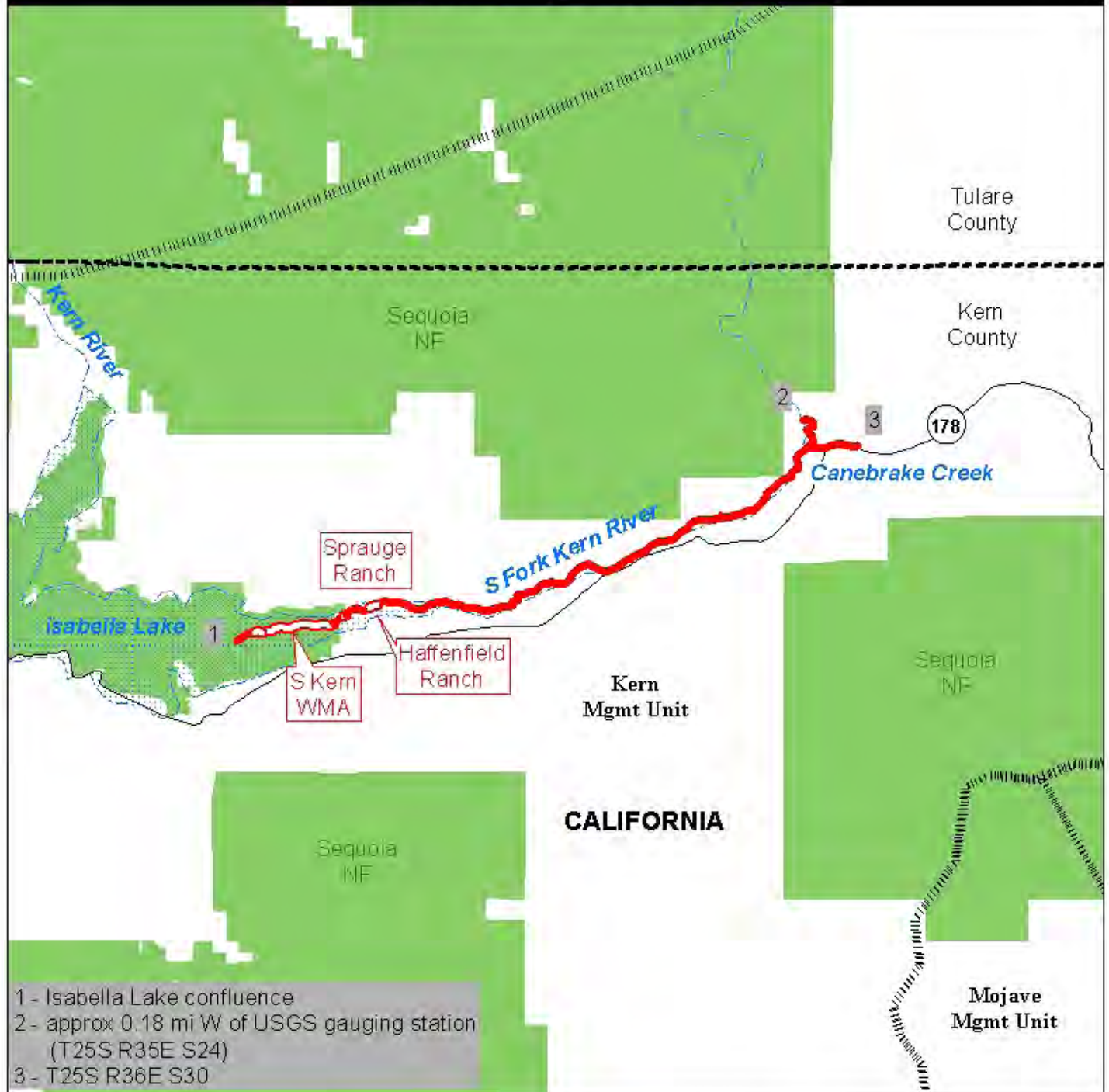


<p><b>ARIZONA</b></p>	<table border="0" style="width: 100%;"> <tr> <td style="width: 50%; vertical-align: top;"> <ul style="list-style-type: none"> <li><span style="color: red;">—</span> Critical Habitat</li> <li><span style="border-bottom: 1px dashed red;">—</span> Considered for Exclusion</li> <li> Management Units</li> <li> Counties</li> <li> Cities</li> <li> Interstates</li> <li> US Highways</li> <li> Rivers</li> </ul> </td> <td style="width: 50%; vertical-align: top;"> <ul style="list-style-type: none"> <li> Department of Defense</li> <li> Fish and Wildlife Service</li> <li> Forest Service</li> <li> National Park Service</li> <li> State</li> <li> Tribal</li> </ul> </td> </tr> </table>	<ul style="list-style-type: none"> <li><span style="color: red;">—</span> Critical Habitat</li> <li><span style="border-bottom: 1px dashed red;">—</span> Considered for Exclusion</li> <li> Management Units</li> <li> Counties</li> <li> Cities</li> <li> Interstates</li> <li> US Highways</li> <li> Rivers</li> </ul>	<ul style="list-style-type: none"> <li> Department of Defense</li> <li> Fish and Wildlife Service</li> <li> Forest Service</li> <li> National Park Service</li> <li> State</li> <li> Tribal</li> </ul>	  
<ul style="list-style-type: none"> <li><span style="color: red;">—</span> Critical Habitat</li> <li><span style="border-bottom: 1px dashed red;">—</span> Considered for Exclusion</li> <li> Management Units</li> <li> Counties</li> <li> Cities</li> <li> Interstates</li> <li> US Highways</li> <li> Rivers</li> </ul>	<ul style="list-style-type: none"> <li> Department of Defense</li> <li> Fish and Wildlife Service</li> <li> Forest Service</li> <li> National Park Service</li> <li> State</li> <li> Tribal</li> </ul>			

### General Locations of Critical Habitat for the Southwestern Willow Flycatcher Hoover to Parker Management Unit



## General Locations of Critical Habitat for the Southwestern Willow Flycatcher Kern Management Unit

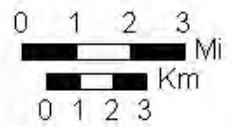


1 - Isabella Lake confluence  
 2 - approx 0.18 mi W of USGS gauging station  
 (T25S R35E S24)  
 3 - T25S R36E S30

### CALIFORNIA

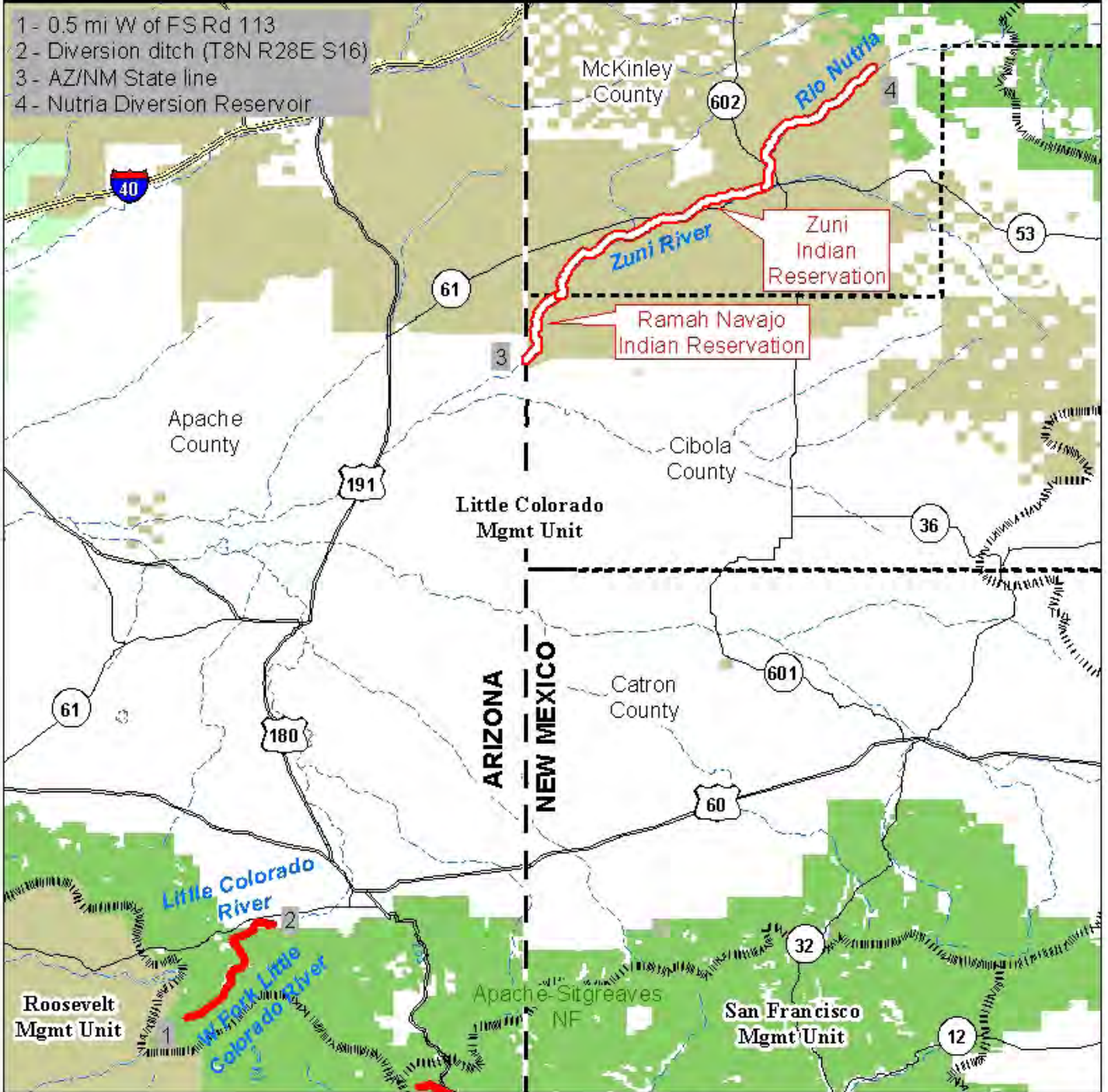


- |                          |                           |
|--------------------------|---------------------------|
| Critical Habitat         | Department of Defense     |
| Considered for Exclusion | Fish and Wildlife Service |
| Management Units         | Forest Service            |
| Counties                 | National Park Service     |
| State Highways           | State                     |
| Rivers                   | Tribal                    |
| Lakes                    |                           |



## General Locations of Critical Habitat for the Southwestern Willow Flycatcher Little Colorado Management Unit

- 1 - 0.5 mi W of FS Rd 113
- 2 - Diversion ditch (T8N R28E S16)
- 3 - AZ/NM State line
- 4 - Nutria Diversion Reservoir



AZ    NM

Detailed Area

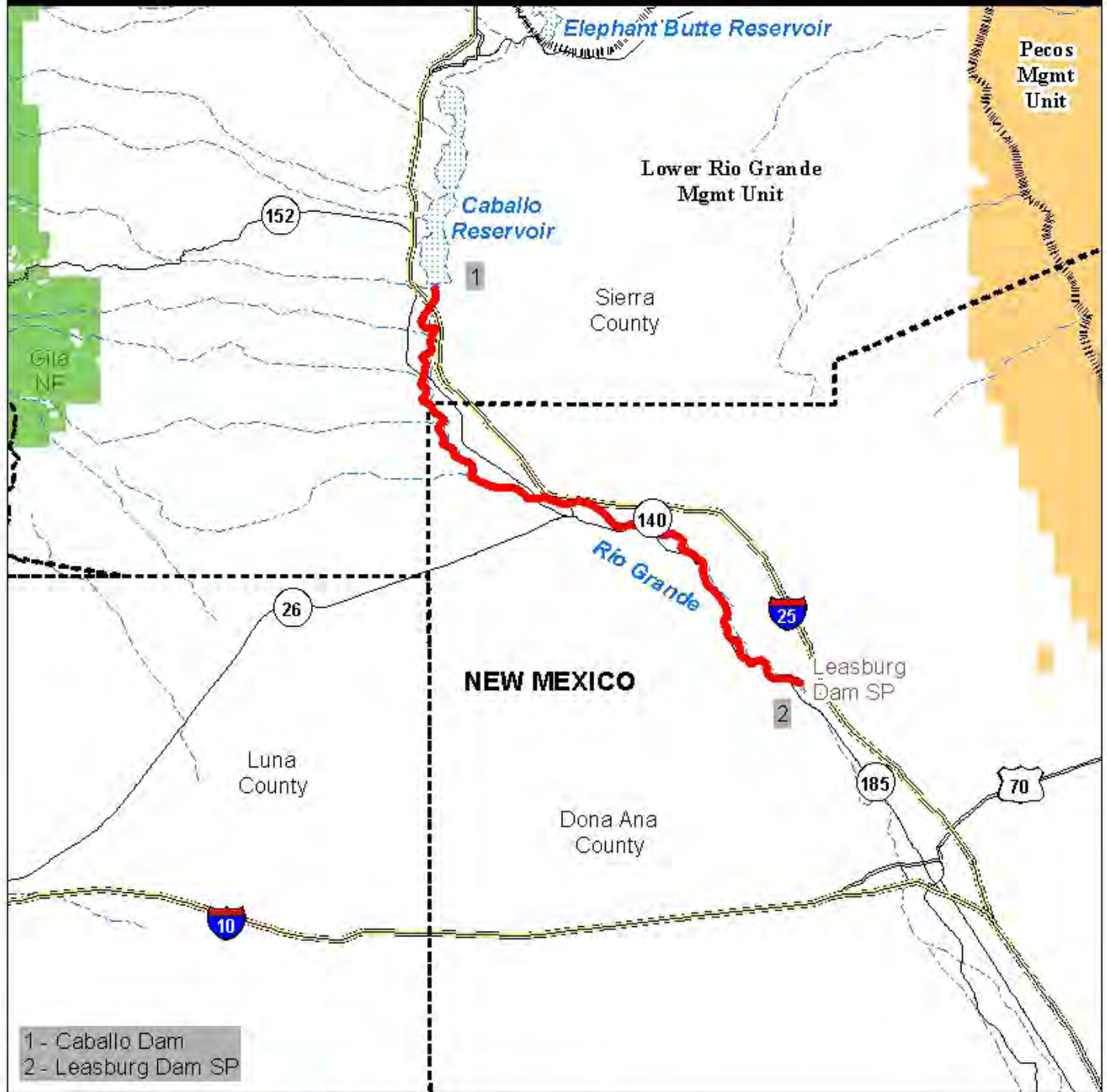
<span style="color: red;">—</span> Critical Habitat	<span style="color: blue;">—</span> Rivers
<span style="border: 1px solid red; padding: 2px;"> </span> Considered for Exclusion	<span style="border: 1px dotted blue; padding: 2px;"> </span> Lakes
<span style="border: 1px dashed black; padding: 2px;"> </span> Management Units	<span style="background-color: orange; width: 15px; height: 10px; display: inline-block;"></span> Department of Defense
<span style="border: 1px solid black; padding: 2px;"> </span> States	<span style="background-color: brown; width: 15px; height: 10px; display: inline-block;"></span> Fish and Wildlife Service
<span style="border: 1px dashed black; padding: 2px;"> </span> Counties	<span style="background-color: green; width: 15px; height: 10px; display: inline-block;"></span> Forest Service
<span style="border-bottom: 2px solid black; width: 20px; display: inline-block;"></span> Interstates	<span style="background-color: lightgreen; width: 15px; height: 10px; display: inline-block;"></span> National Park Service
<span style="border-bottom: 1px solid black; width: 20px; display: inline-block;"></span> US Highways	<span style="border-bottom: 1px solid black; width: 20px; display: inline-block;"></span> State
<span style="border-bottom: 1px dashed black; width: 20px; display: inline-block;"></span> State Highways	<span style="background-color: #c0c0c0; width: 15px; height: 10px; display: inline-block;"></span> Tribal

0 3 6 9  
Mi

0 3 6 9  
Km



## General Locations of Critical Habitat for the Southwestern Willow Flycatcher Lower Rio Grande Management Unit



1 - Caballo Dam  
2 - Leasburg Dam SP

**NEW MEXICO**

Detailed Area

	Critical Habitat		Lakes
	Considered for Exclusion		Department of Defense
	Management Units		Fish and Wildlife Service
	Counties		Forest Service
	Interstates		National Park Service
	US Highways		State
	State Highways		Tribal
	Rivers		

Scale: 0 3 6 9 Mi / 0 3 6 9 Km

North Arrow

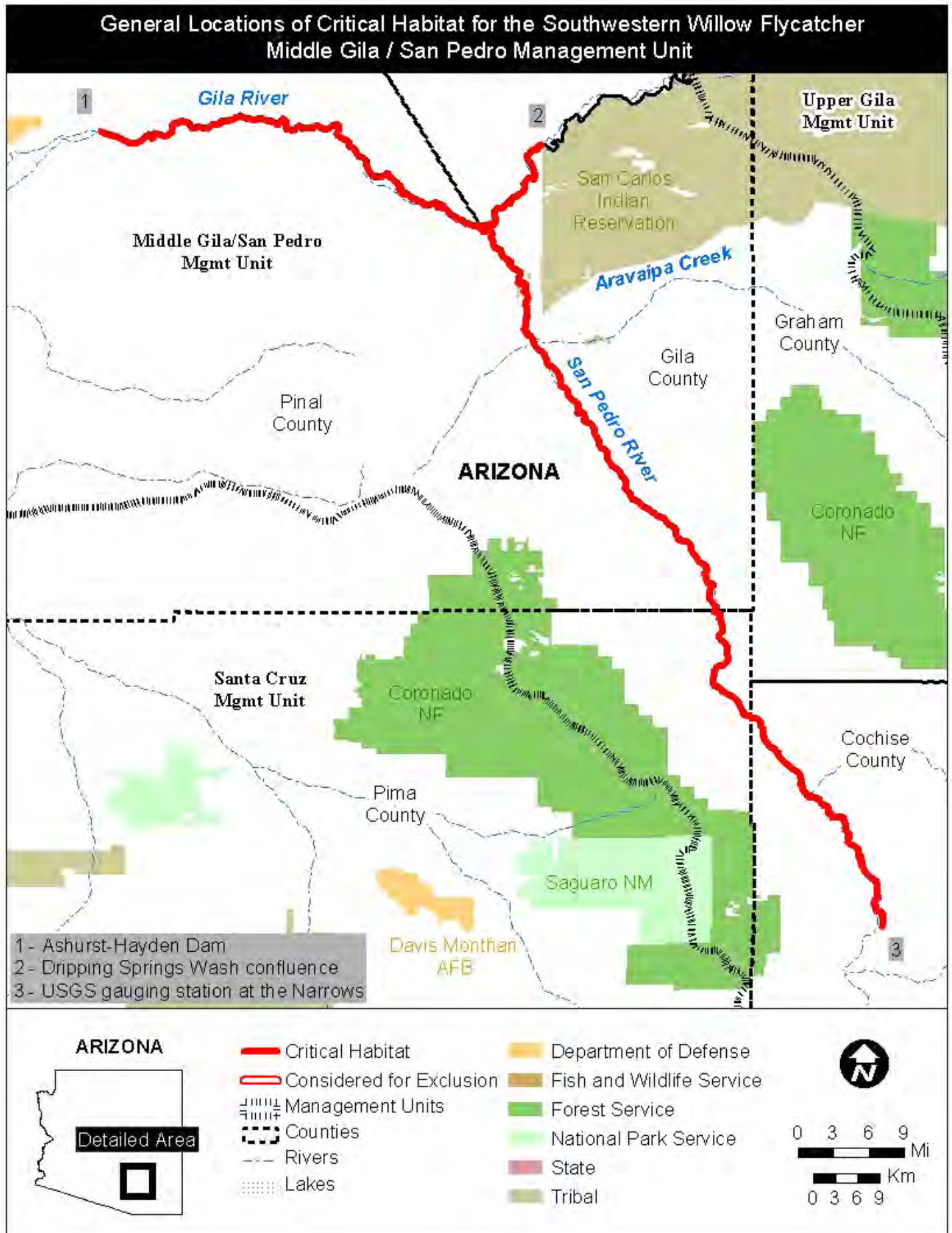
### General Locations of Critical Habitat for the Southwestern Willow Flycatcher Middle Colorado Management Unit



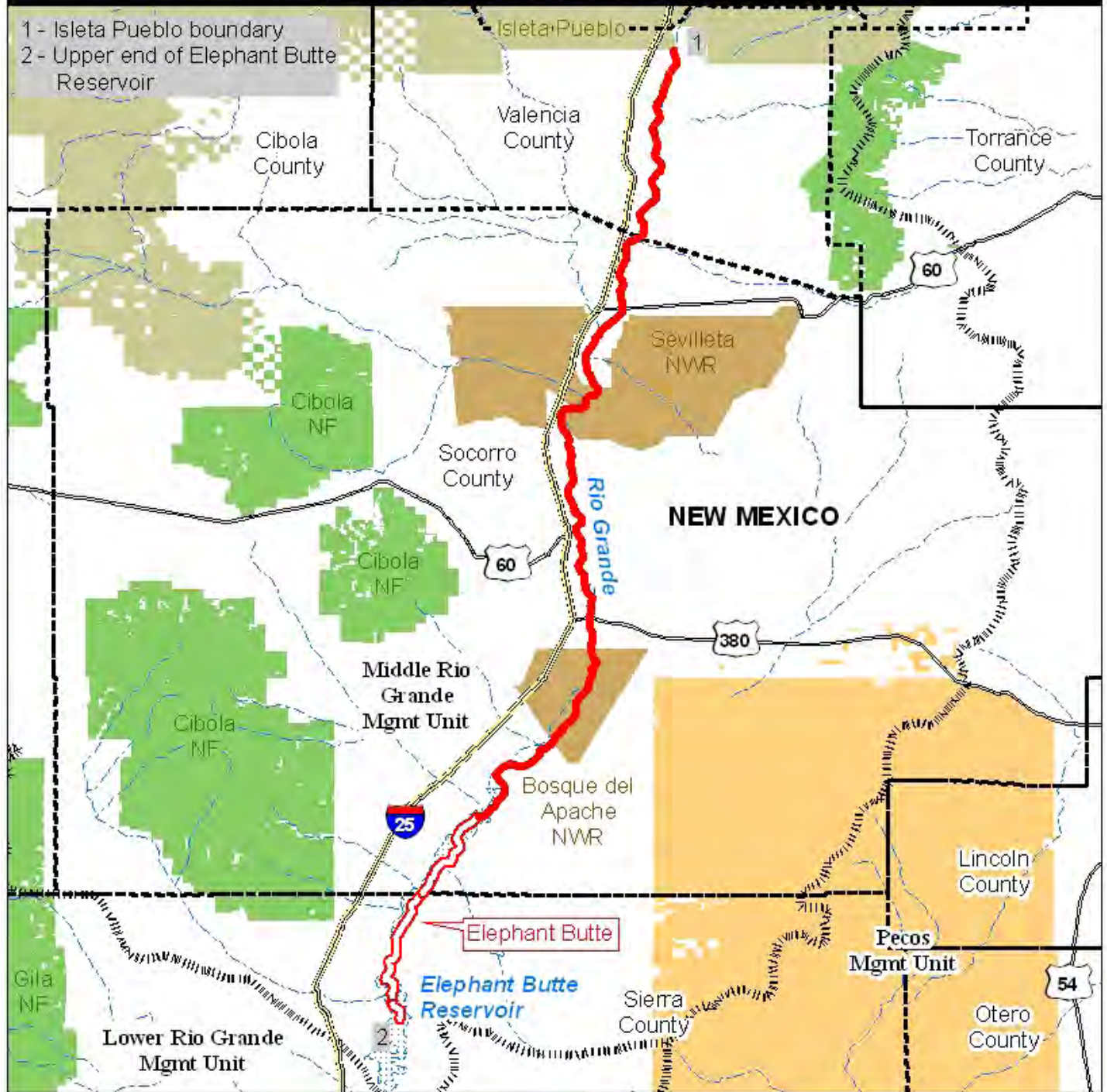
1 - Lake Mead (NV/AZ State Line)  
2 - River Mile 234 (T28N R12W S6)

**ARIZONA**

Critical Habitat	Department of Defense
Considered for Exclusion	Fish and Wildlife Service
Management Units	Forest Service
States	National Park Service
Counties	State
Lakes	Tribal
Rivers	



### General Locations of Critical Habitat for the Southwestern Willow Flycatcher Middle Rio Grande Management Unit



**NEW MEXICO**

Critical Habitat	Department of Defense
Considered for Exclusion	Fish and Wildlife Service
Management Units	Forest Service
Counties	National Park Service
Interstates	State
US Highways	Tribal
Rivers	
Lakes	

## General Locations of Critical Habitat for the Southwestern Willow Flycatcher Mojave Management Unit

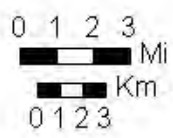


- 1 - Vista Rd Bridge
- 2 - Bear Valley Rd crossing
- 3 - SR 173 Bridge
- 4 - approx 0.7 mi E of Greenlead Cr confluence

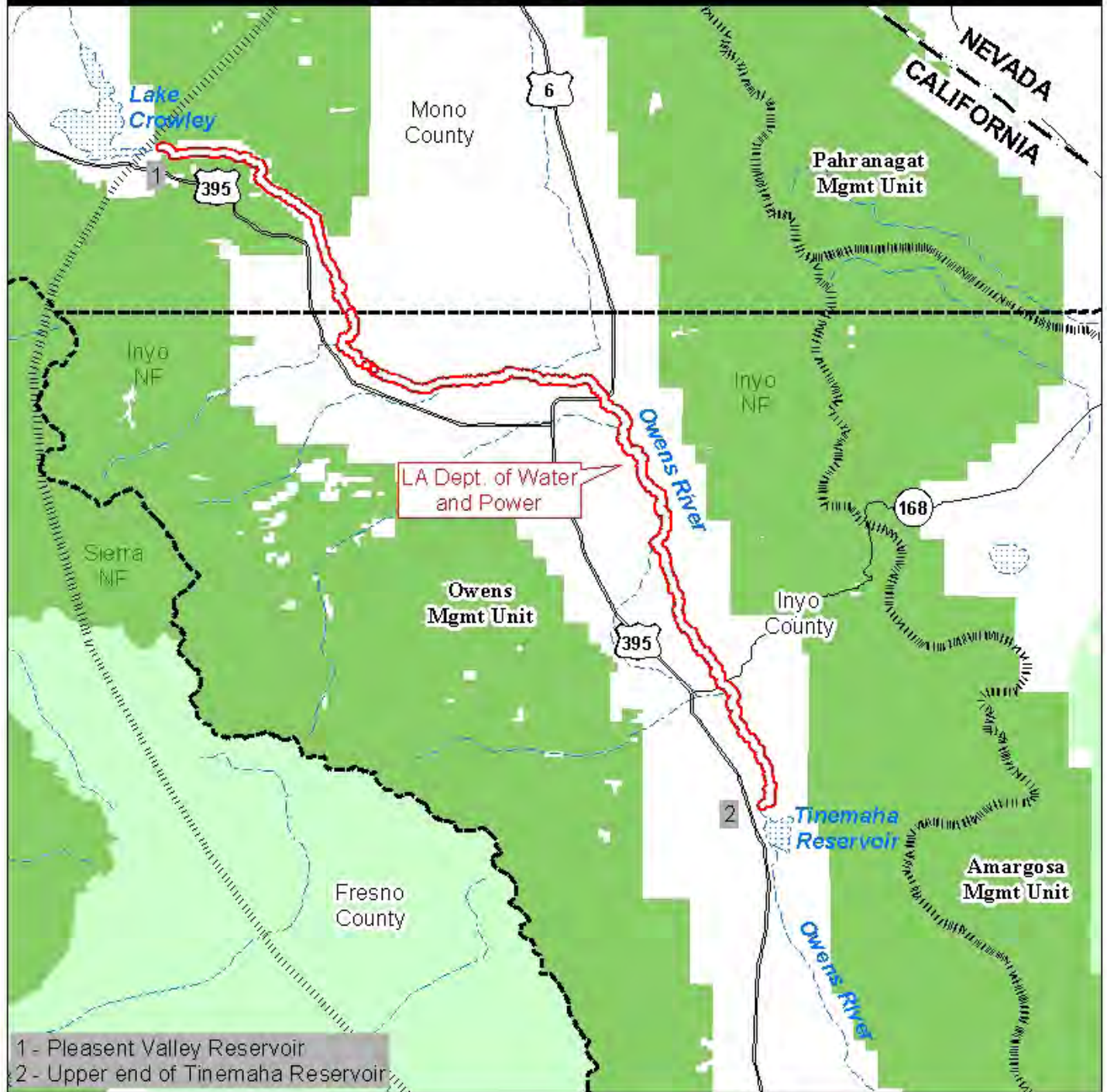
**CALIFORNIA**



- |                          |                           |
|--------------------------|---------------------------|
| Critical Habitat         | Lakes                     |
| Considered for Exclusion | Department of Defense     |
| Management Units         | Fish and Wildlife Service |
| Counties                 | Forest Service            |
| Interstates              | National Park Service     |
| State Highways           | State                     |
| Rivers                   | Tribal                    |



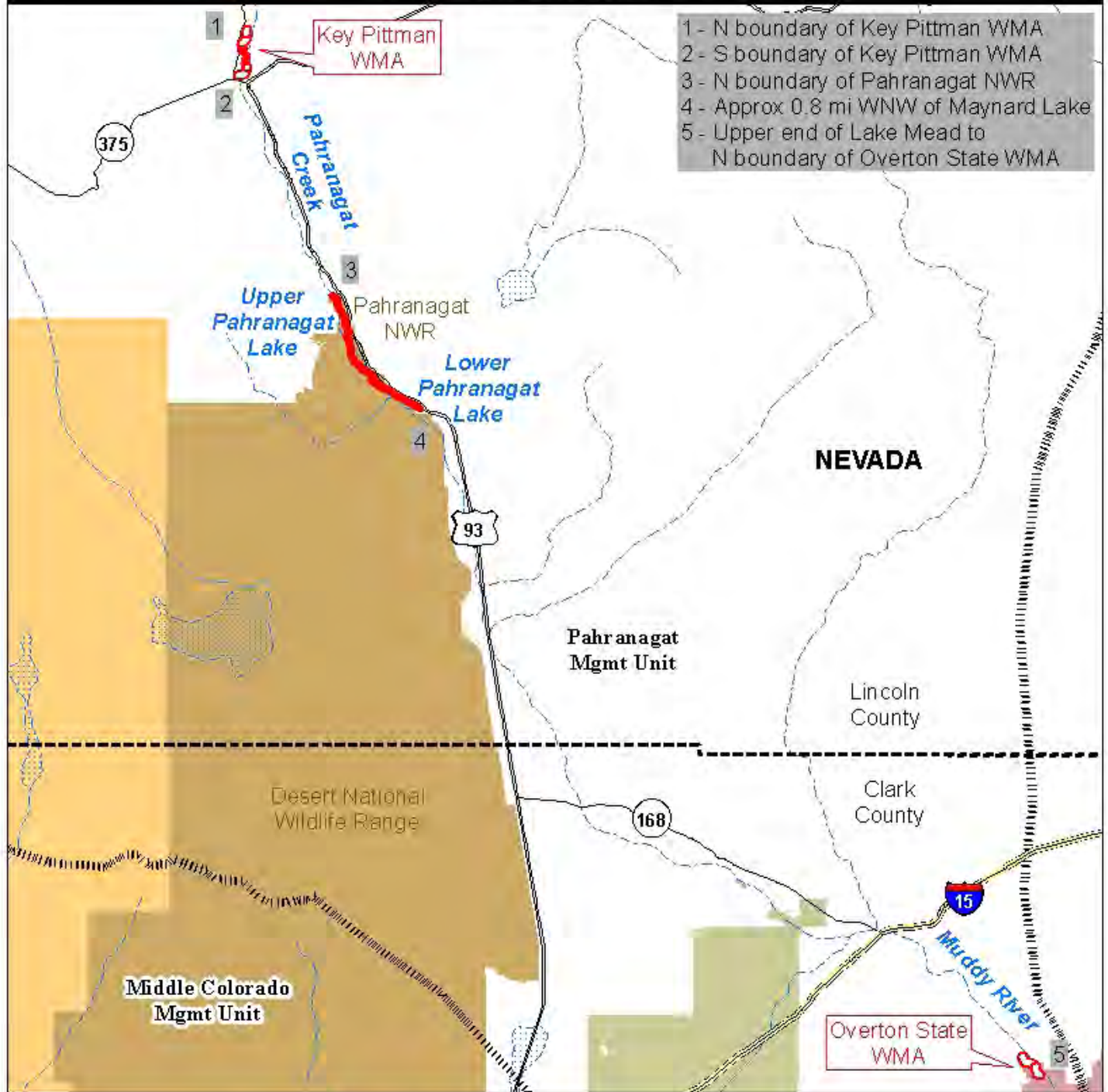
## General Locations of Critical Habitat for the Southwestern Willow Flycatcher Owens Management Unit

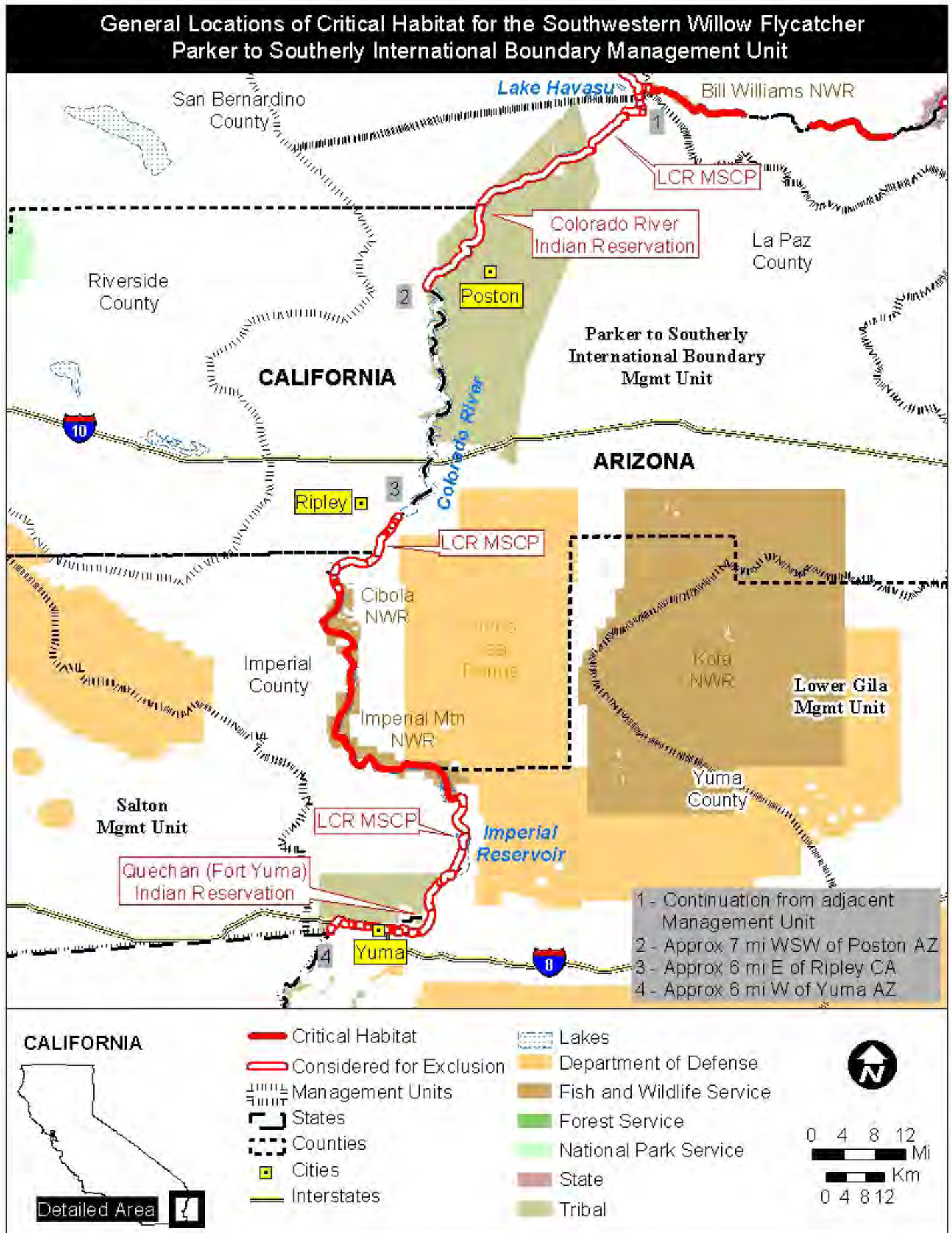


1 - Pleasant Valley Reservoir  
2 - Upper end of Tinemaha Reservoir



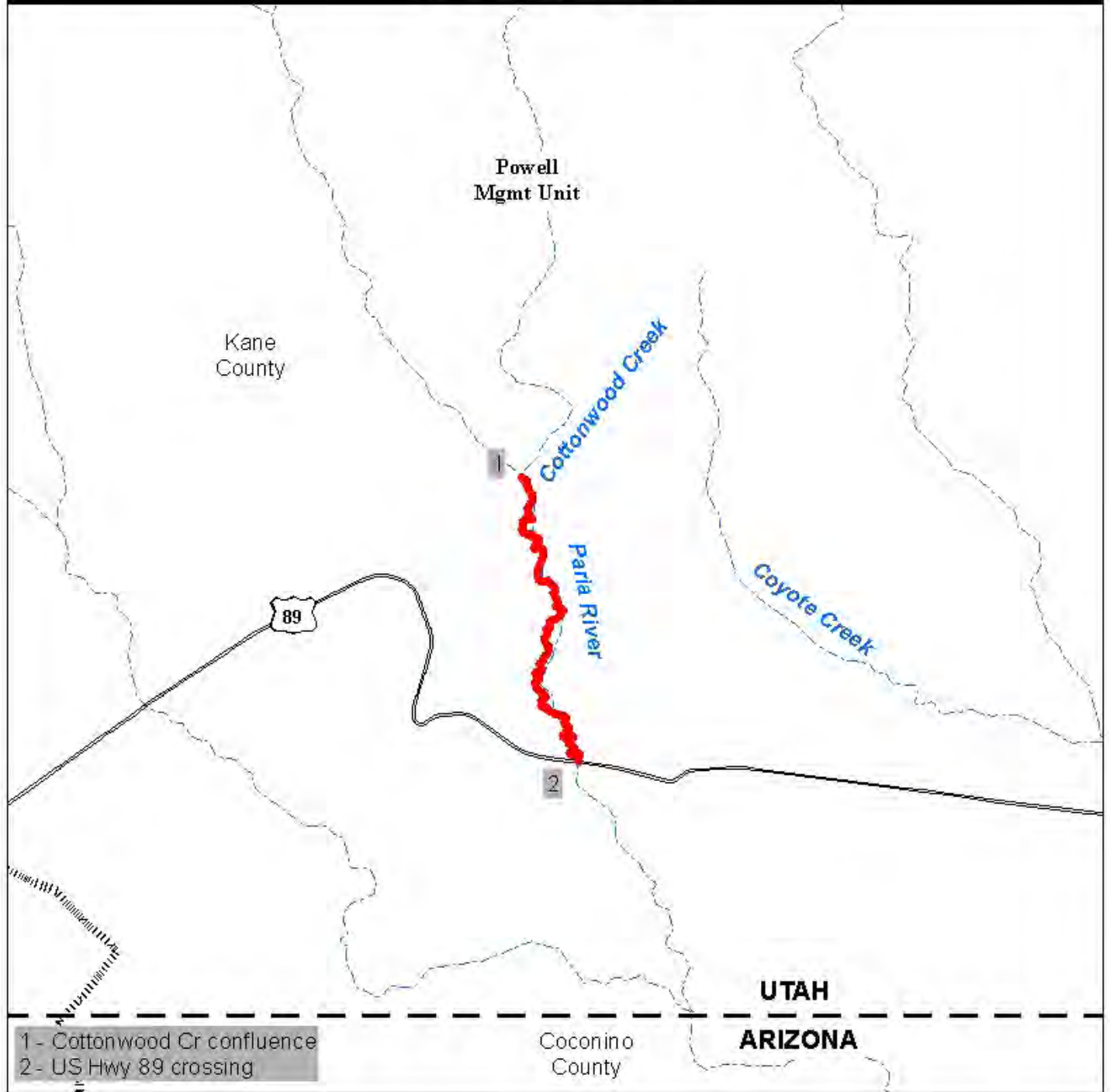
## General Locations of Critical Habitat for the Southwestern Willow Flycatcher Pahrnanagat Management Unit



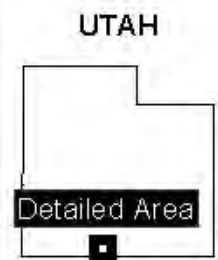




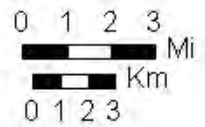
## General Locations of Critical Habitat for the Southwestern Willow Flycatcher Powell Management Unit



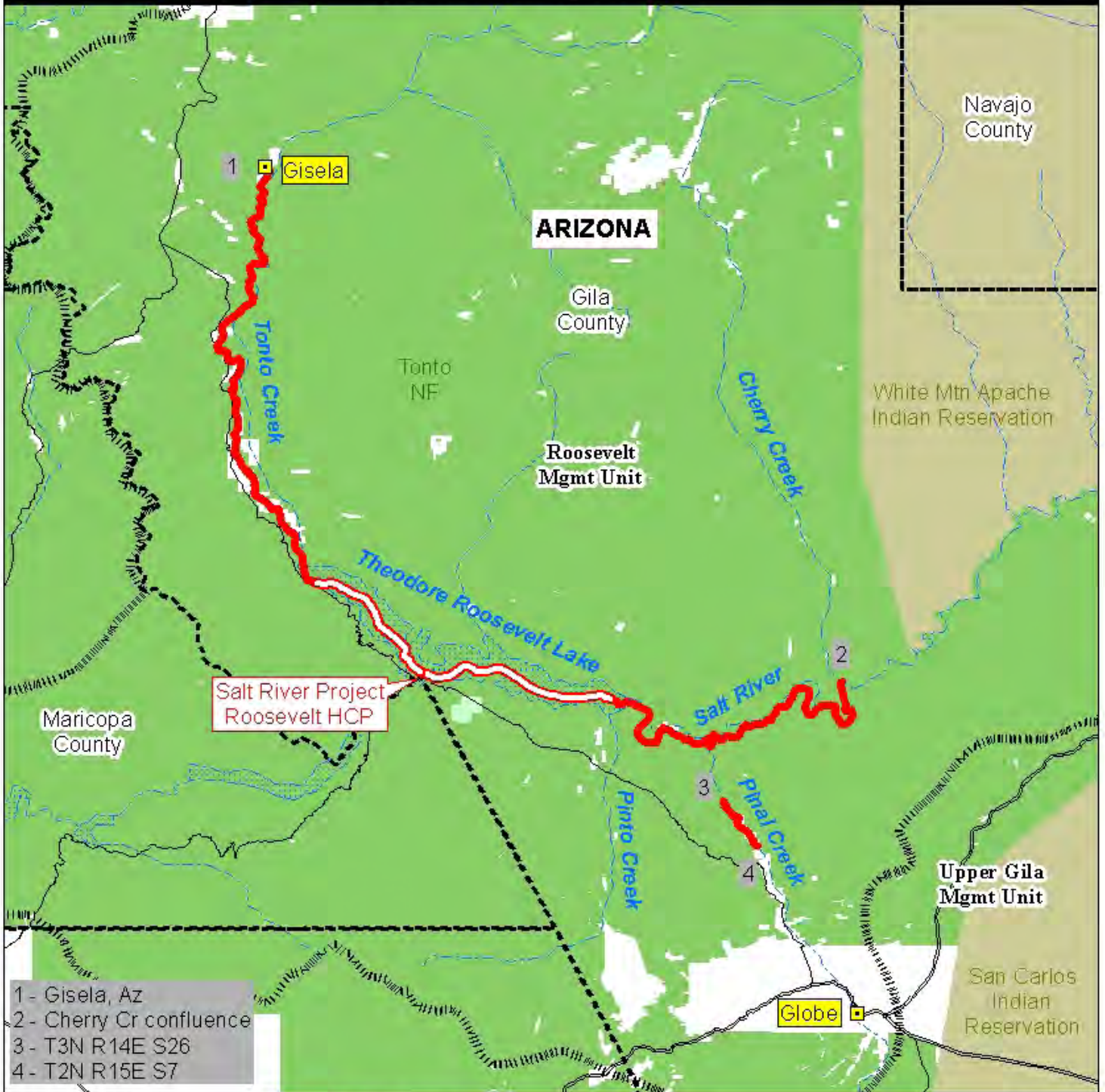
1 - Cottonwood Cr confluence  
2 - US Hwy 89 crossing



- Critical Habitat
- Considered for Exclusion
- States
- US Highways
- Rivers
- Management Units



### General Locations of Critical Habitat for the Southwestern Willow Flycatcher Roosevelt Management Unit



- 1 - Gisela, Az
- 2 - Cherry Cr confluence
- 3 - T3N R14E S26
- 4 - T2N R15E S7

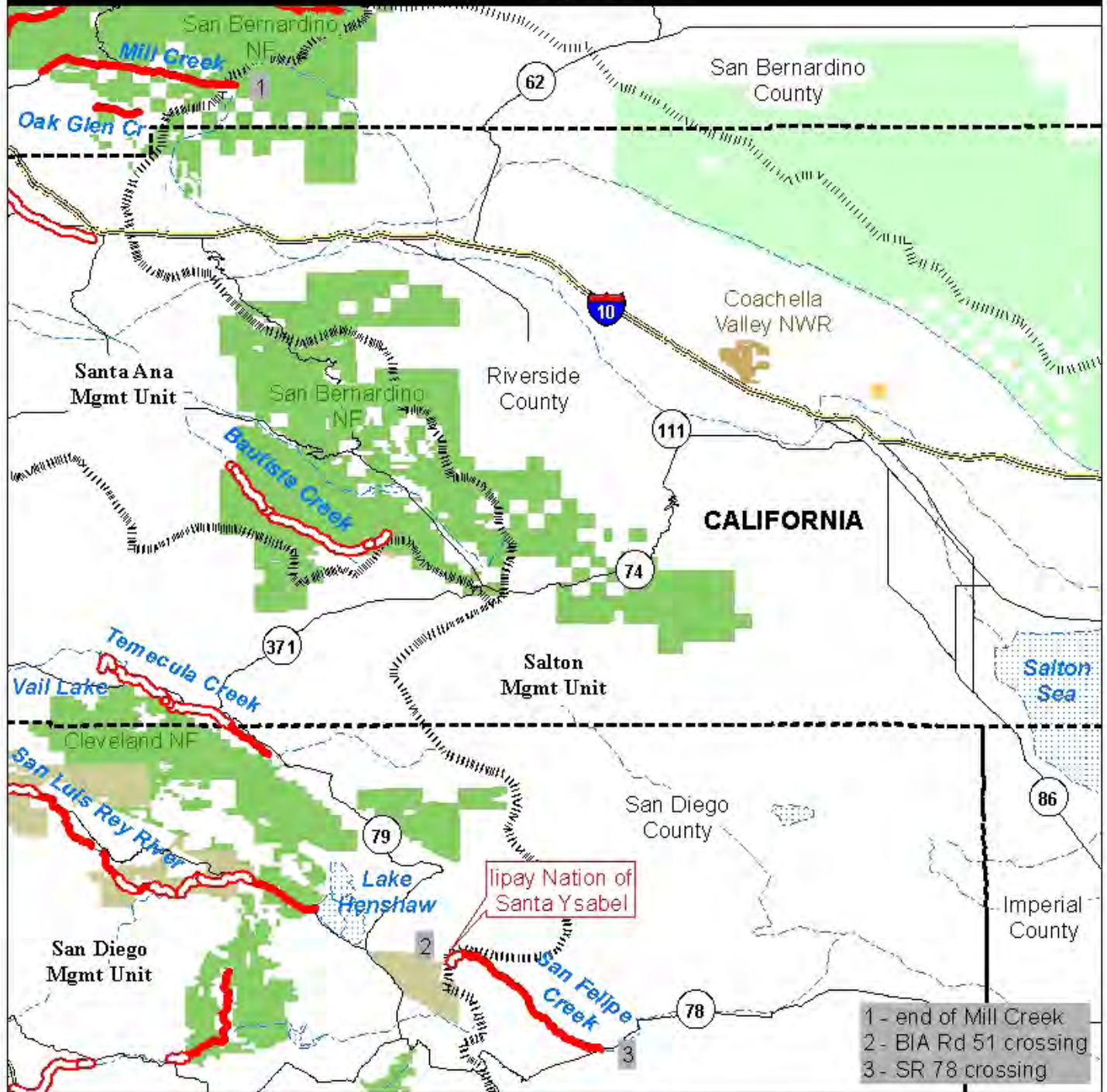
**ARIZONA**

Detailed Area

Critical Habitat	Lakes
Considered for Exclusion	Department of Defense
Management Units	Fish and Wildlife Service
Counties	Forest Service
Cities	National Park Service
US Highways	State
State Highways	Tribal
Rivers	

0 2 4 6  
Mi  
0 2 4 6  
Km

## General Locations of Critical Habitat for the Southwestern Willow Flycatcher Salton Management Unit



1 - end of Mill Creek  
 2 - BIA Rd 51 crossing  
 3 - SR 78 crossing

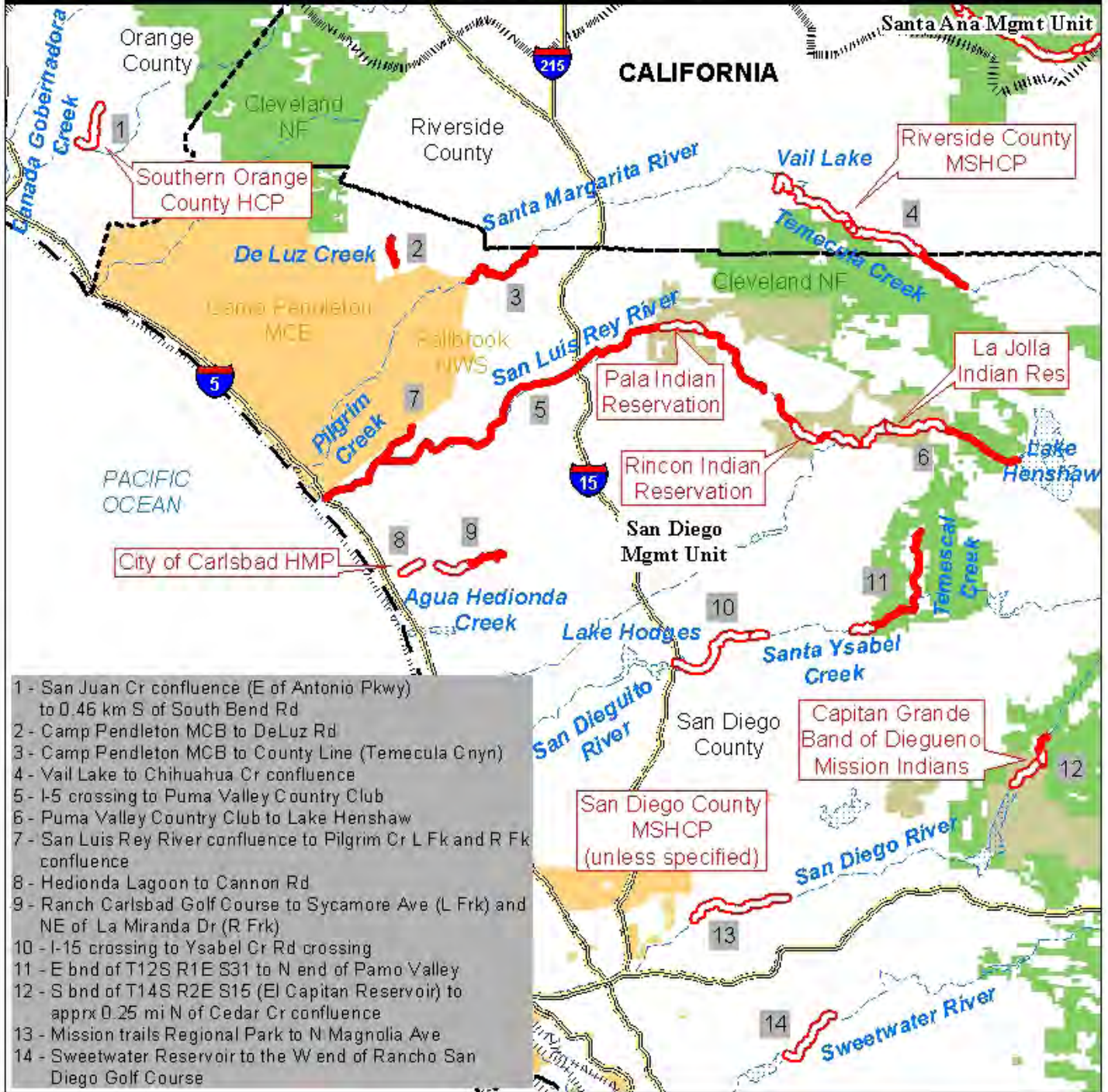
### CALIFORNIA



- |                          |                           |
|--------------------------|---------------------------|
| Critical Habitat         | Lakes                     |
| Considered for Exclusion | Department of Defense     |
| Management Units         | Fish and Wildlife Service |
| Counties                 | Forest Service            |
| Interstates              | National Park Service     |
| State Highways           | State                     |
| Rivers                   | Tribal                    |



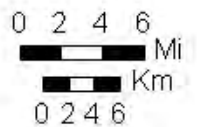
## General Locations of Critical Habitat for the Southwestern Willow Flycatcher San Diego Management Unit



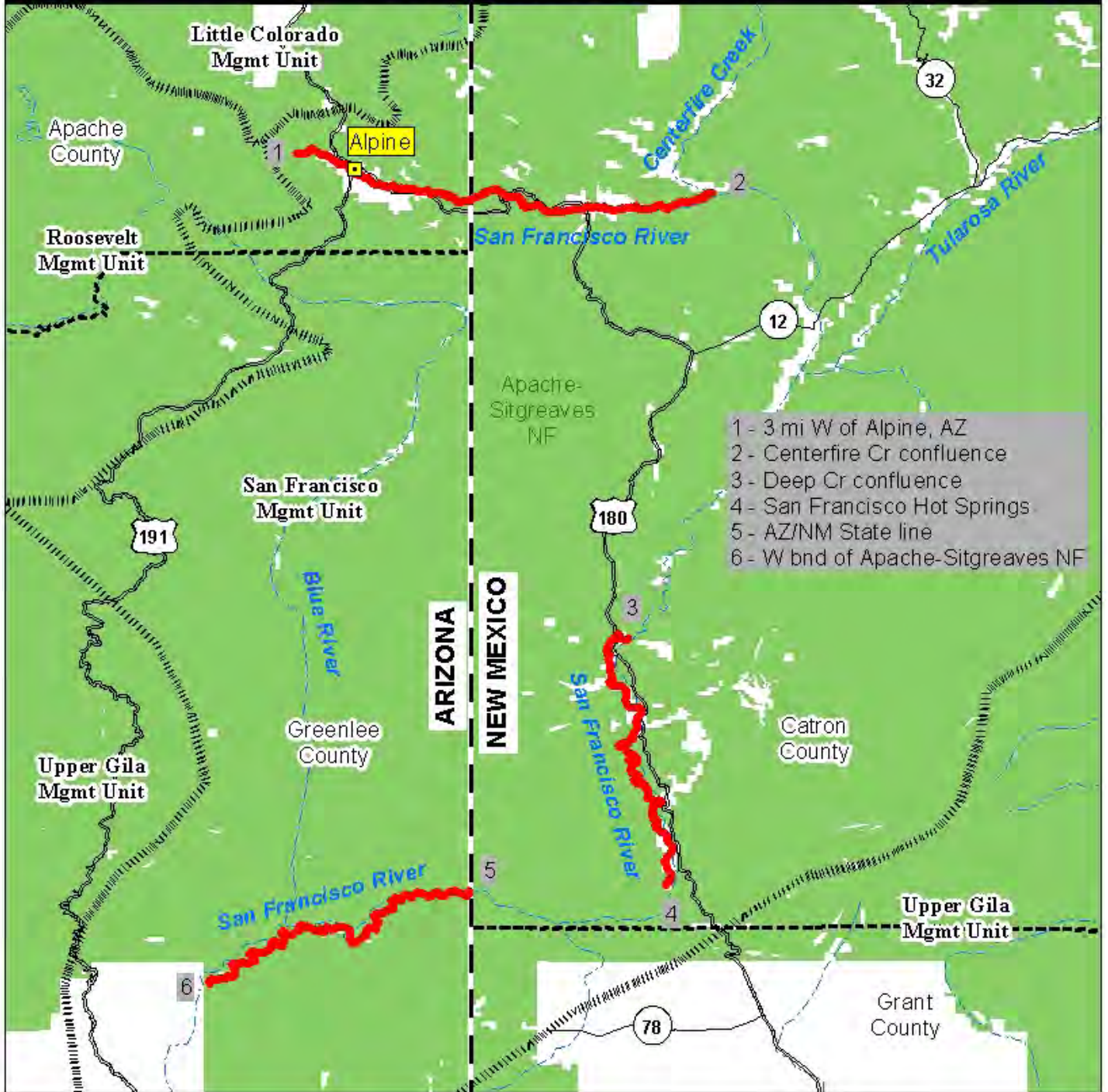
**CALIFORNIA**



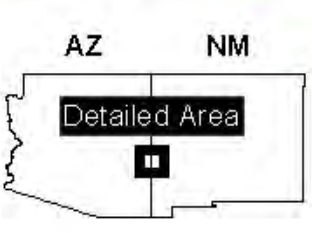
- Critical Habitat
- ⋯ Lakes
- ⬭ Considered for Exclusion
- Department of Defense
- ▨ Management Units
- Fish and Wildlife Service
- ▭ States
- Forest Service
- ▭ Counties
- National Park Service
- Interstates
- State
- - - Rivers
- Tribal



### General Locations of Critical Habitat for the Southwestern Willow Flycatcher San Francisco Management Unit

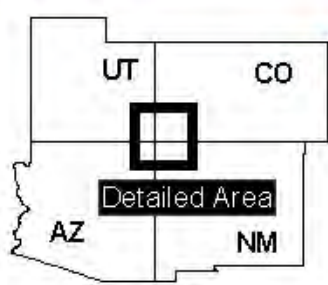
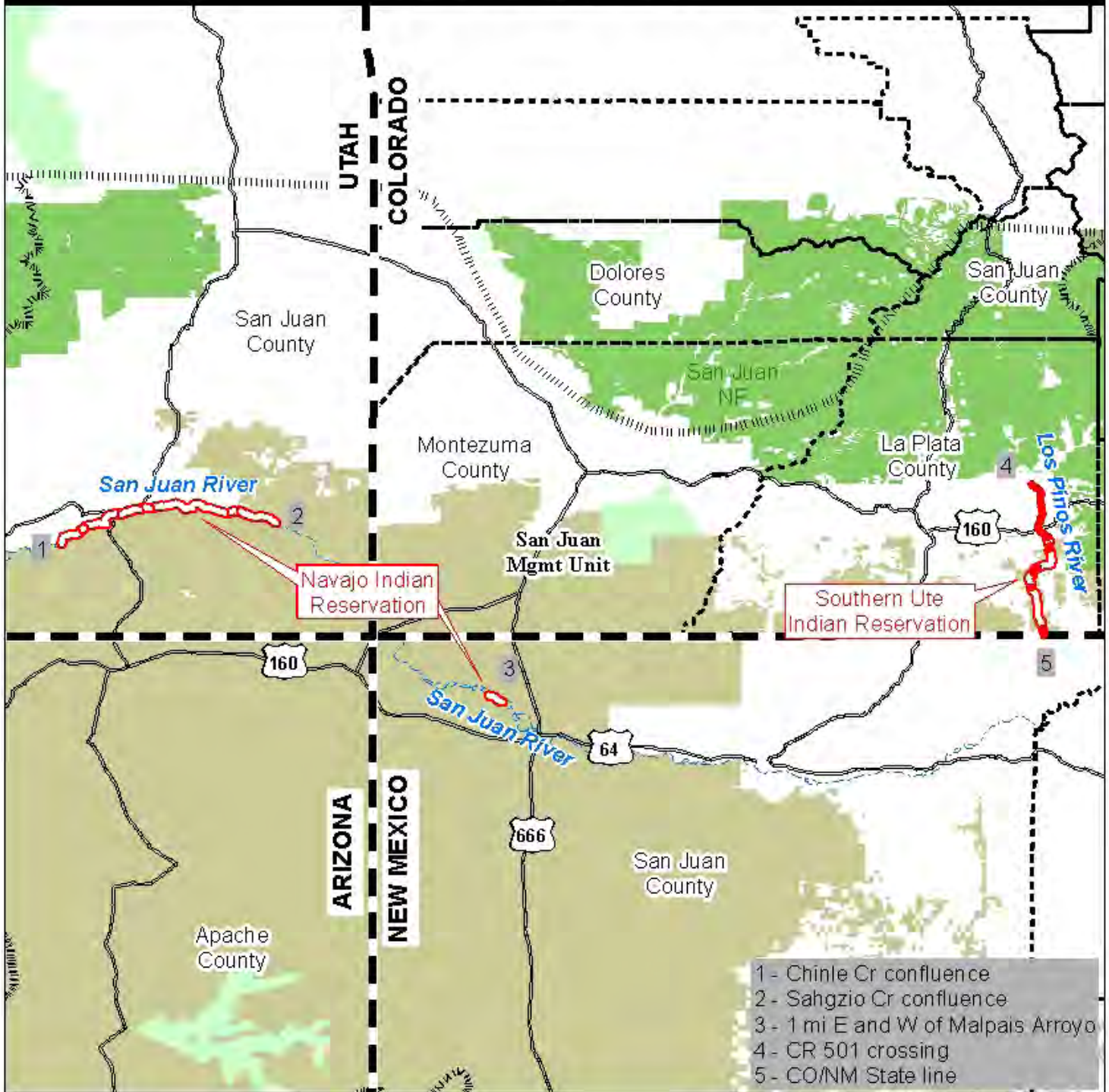


- 1 - 3 mi W of Alpine, AZ
- 2 - Centerfire Cr confluence
- 3 - Deep Cr confluence
- 4 - San Francisco Hot Springs
- 5 - AZ/NM State line
- 6 - W bnd of Apache-Sitgreaves NF



- Critical Habitat
- Considered for Exclusion
- Management Units
- States
- Counties
- Cities
- US Highways
- State Highways
- Department of Defense
- Fish and Wildlife Service
- Forest Service
- National Park Service
- State
- Tribal

## General Locations of Critical Habitat for the Southwestern Willow Flycatcher San Juan Management Unit

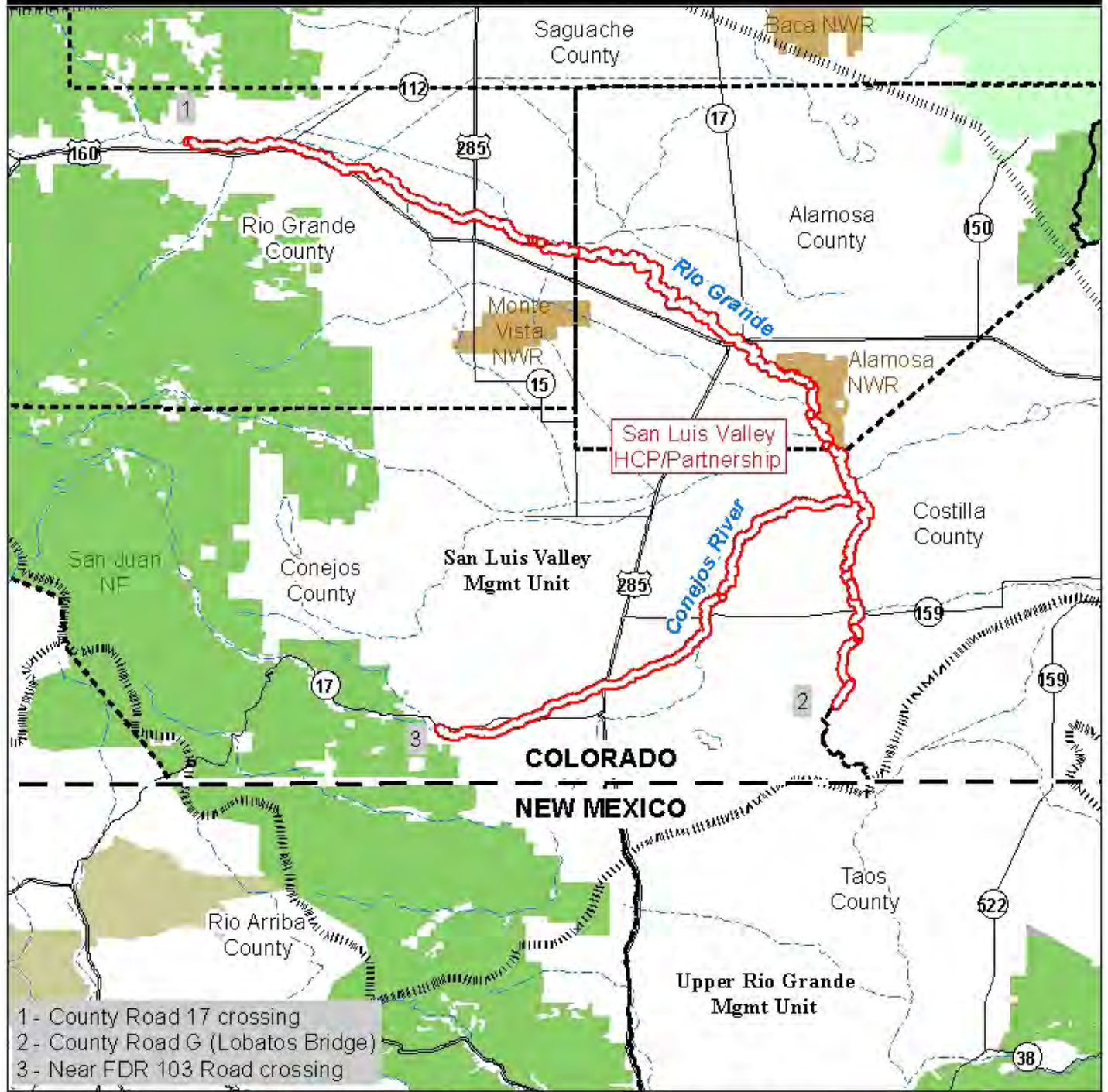


Critical Habitat	Rivers
Considered for Exclusion	Department of Defense
Management Units	Fish and Wildlife Service
States	Forest Service
Counties	National Park Service
US Highways	State
	Tribal

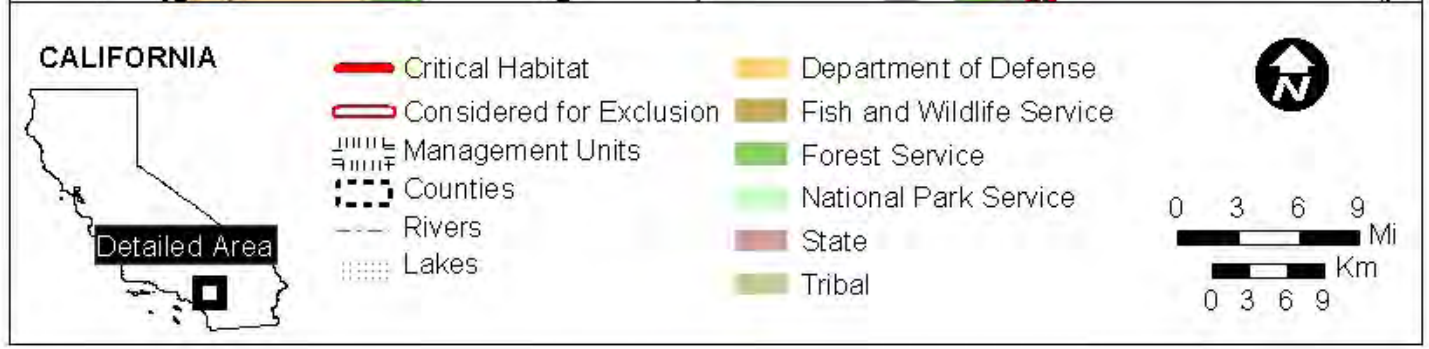
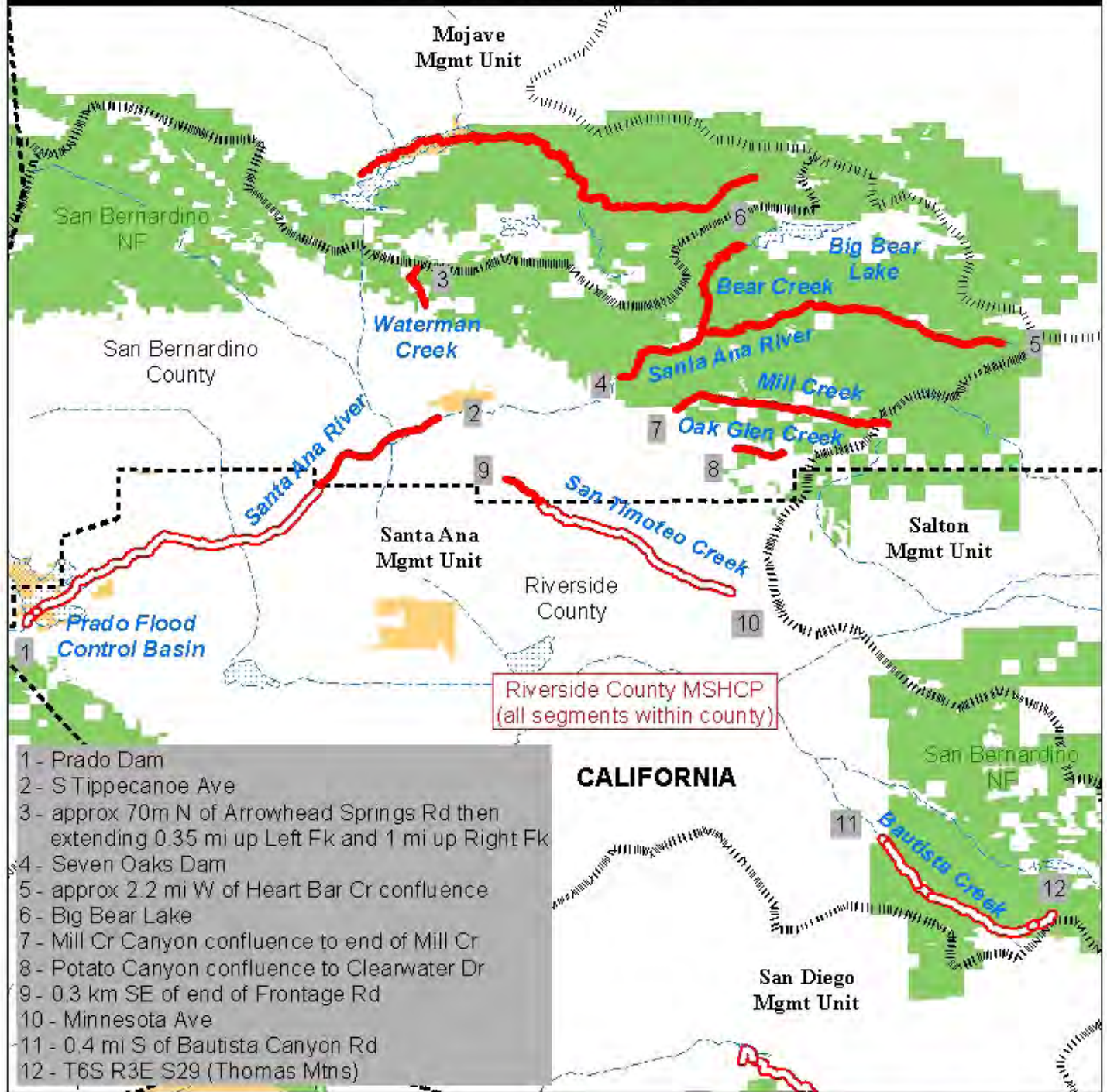
0 5 10 15  
Mi

0 5 10 15  
Km

## General Locations of Critical Habitat for the Southwestern Willow Flycatcher San Luis Valley Management Unit

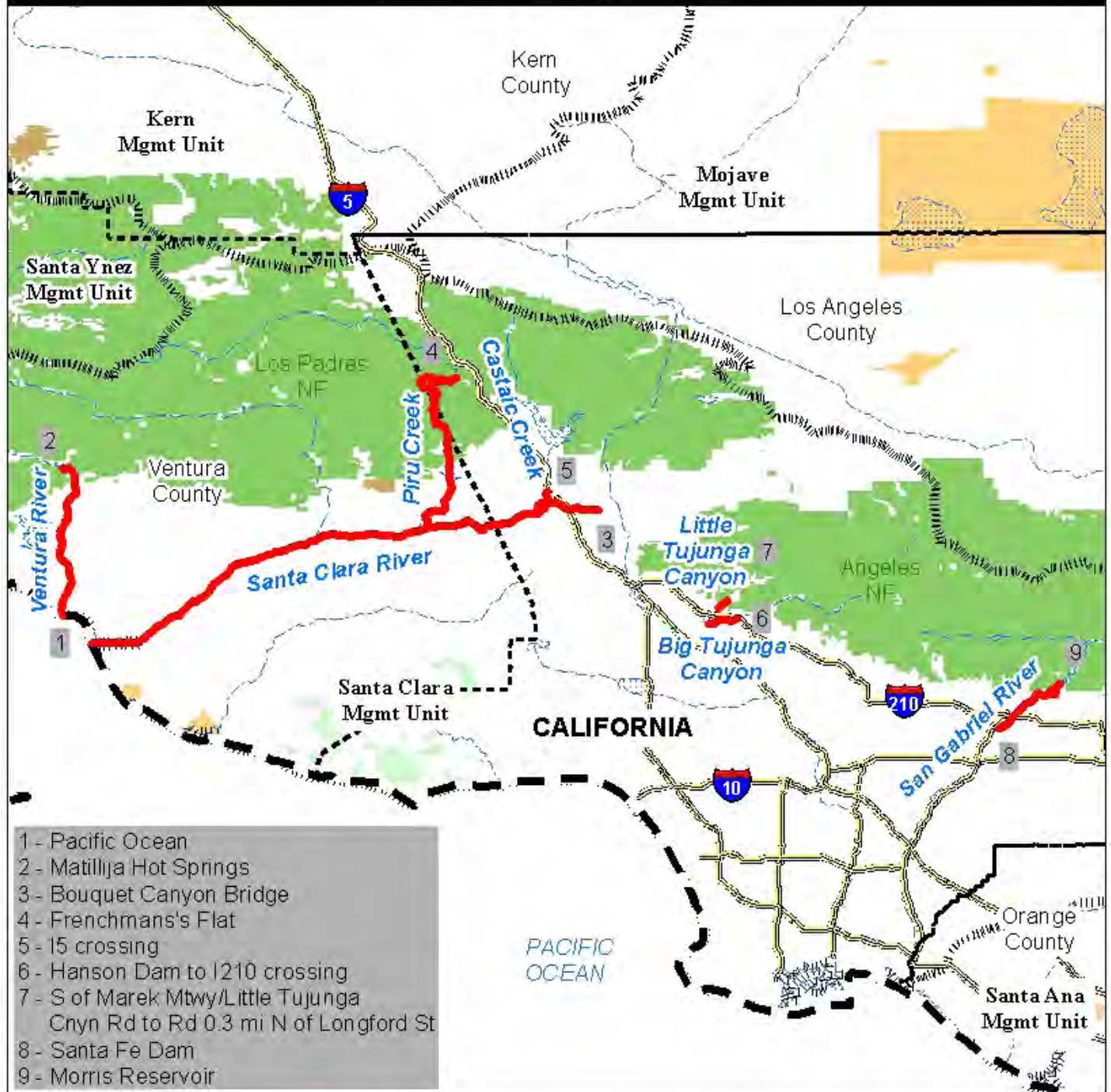


## General Locations of Critical Habitat for the Southwestern Willow Flycatcher Santa Ana Management Unit

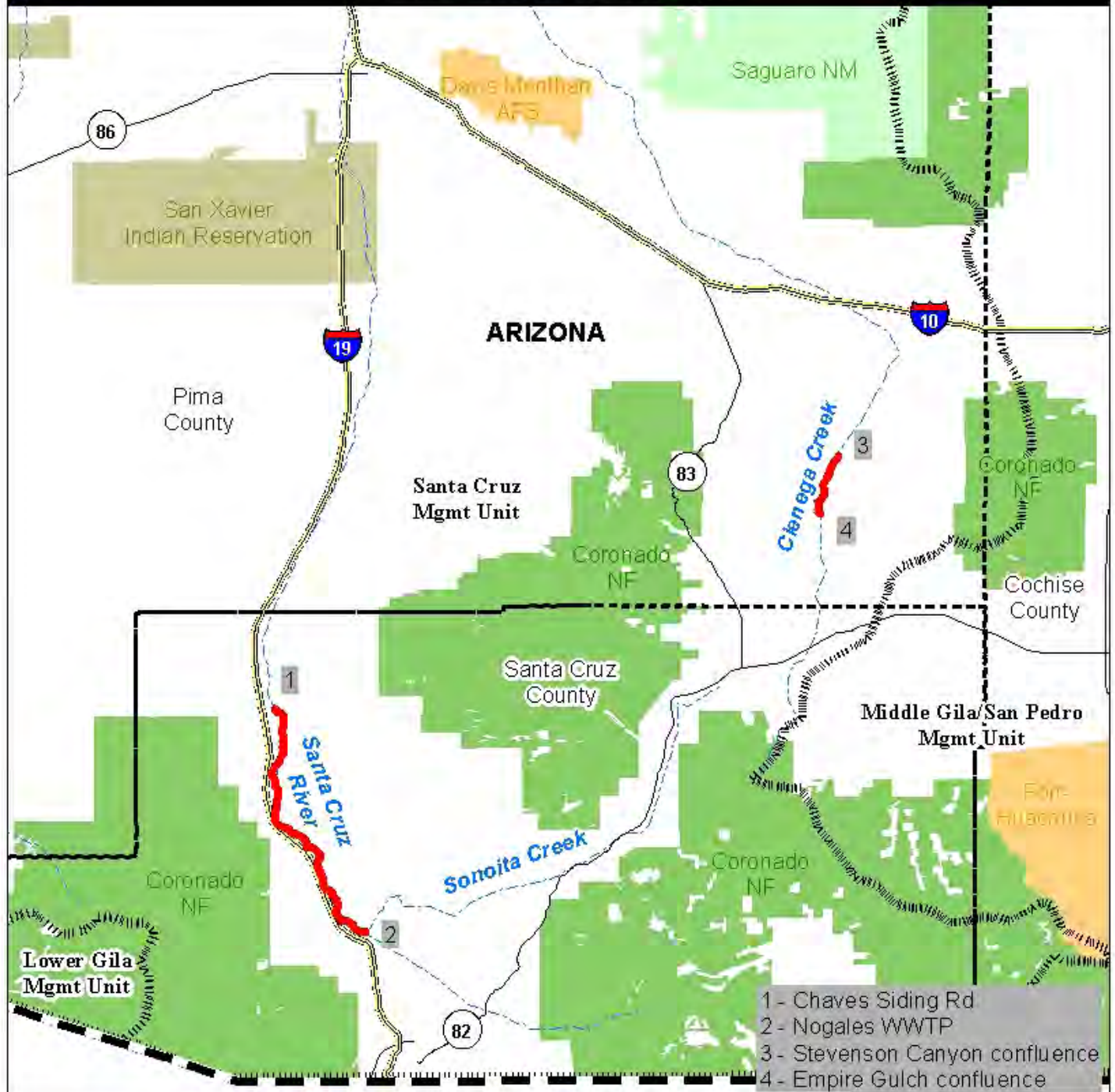




## General Locations of Critical Habitat for the Southwestern Willow Flycatcher Santa Clara Management Unit



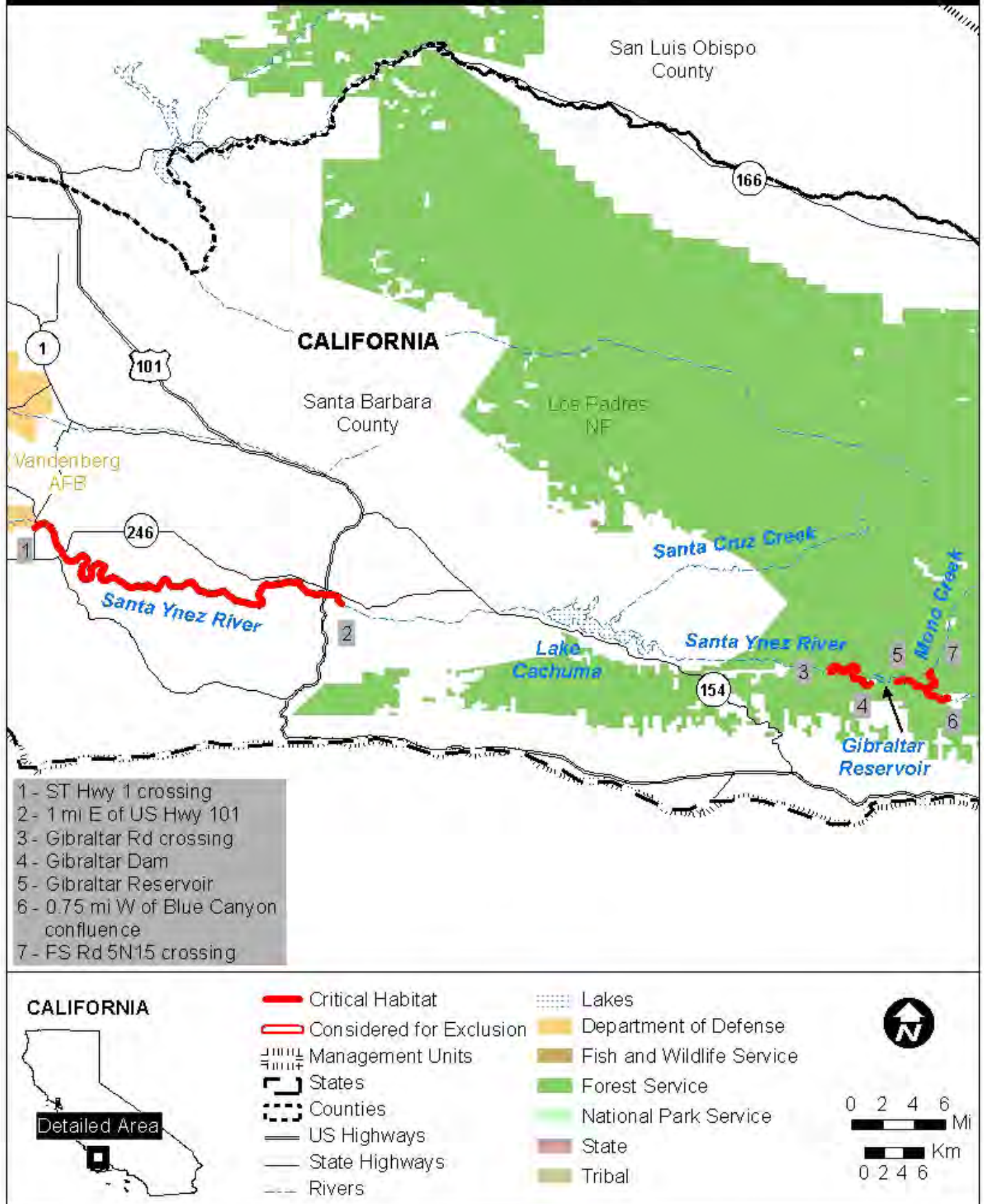
## General Locations of Critical Habitat for the Southwestern Willow Flycatcher Santa Cruz Management Unit



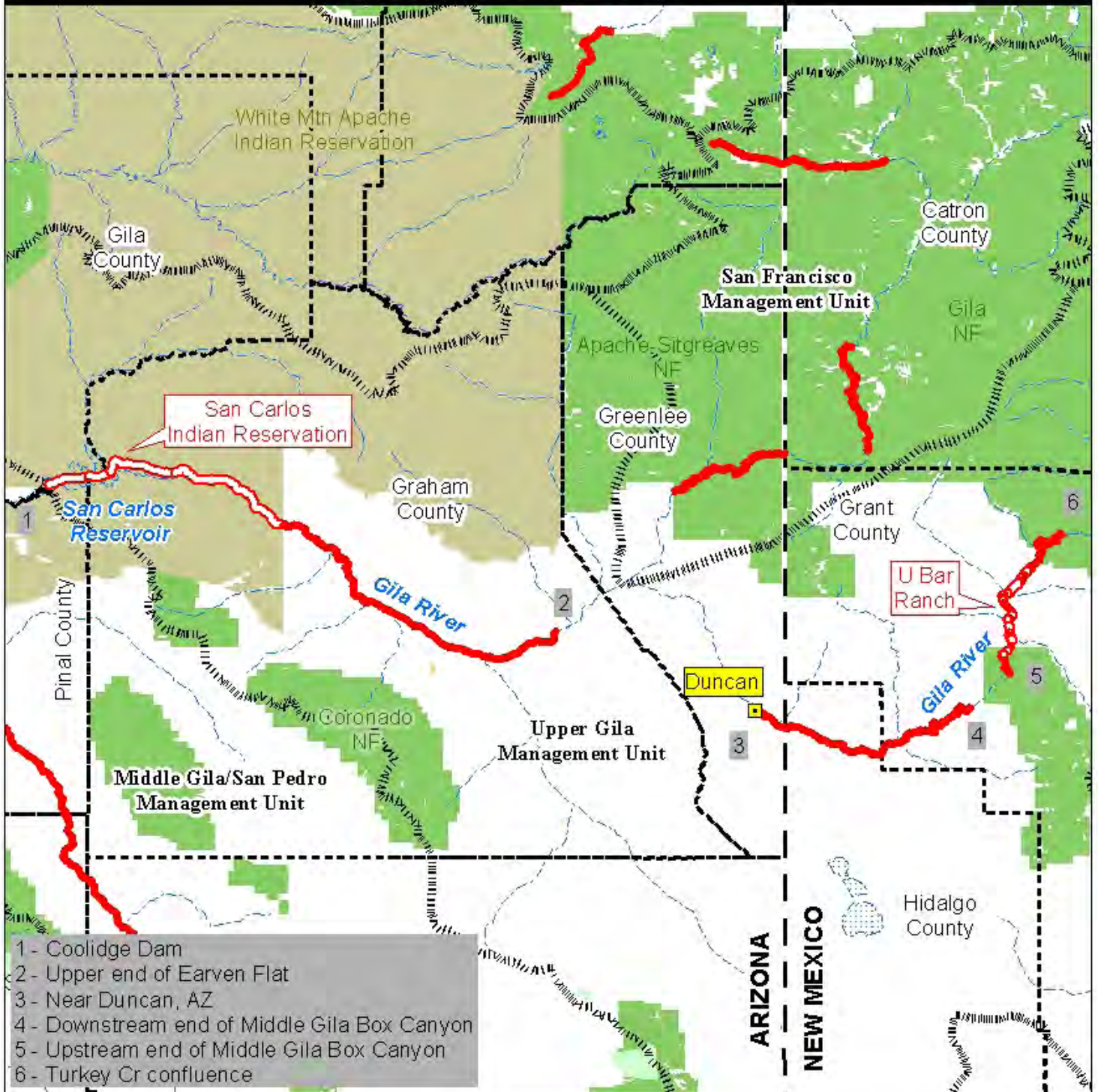
- 1 - Chaves Siding Rd
- 2 - Nogales WWTP
- 3 - Stevenson Canyon confluence
- 4 - Empire Gulch confluence



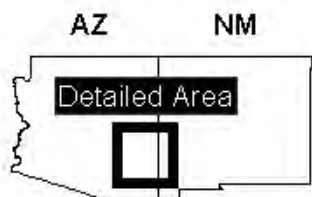
## General Locations of Critical Habitat for the Southwestern Willow Flycatcher Santa Ynez Management Unit



## General Locations of Critical Habitat for the Southwestern Willow Flycatcher Upper Gila Management Unit



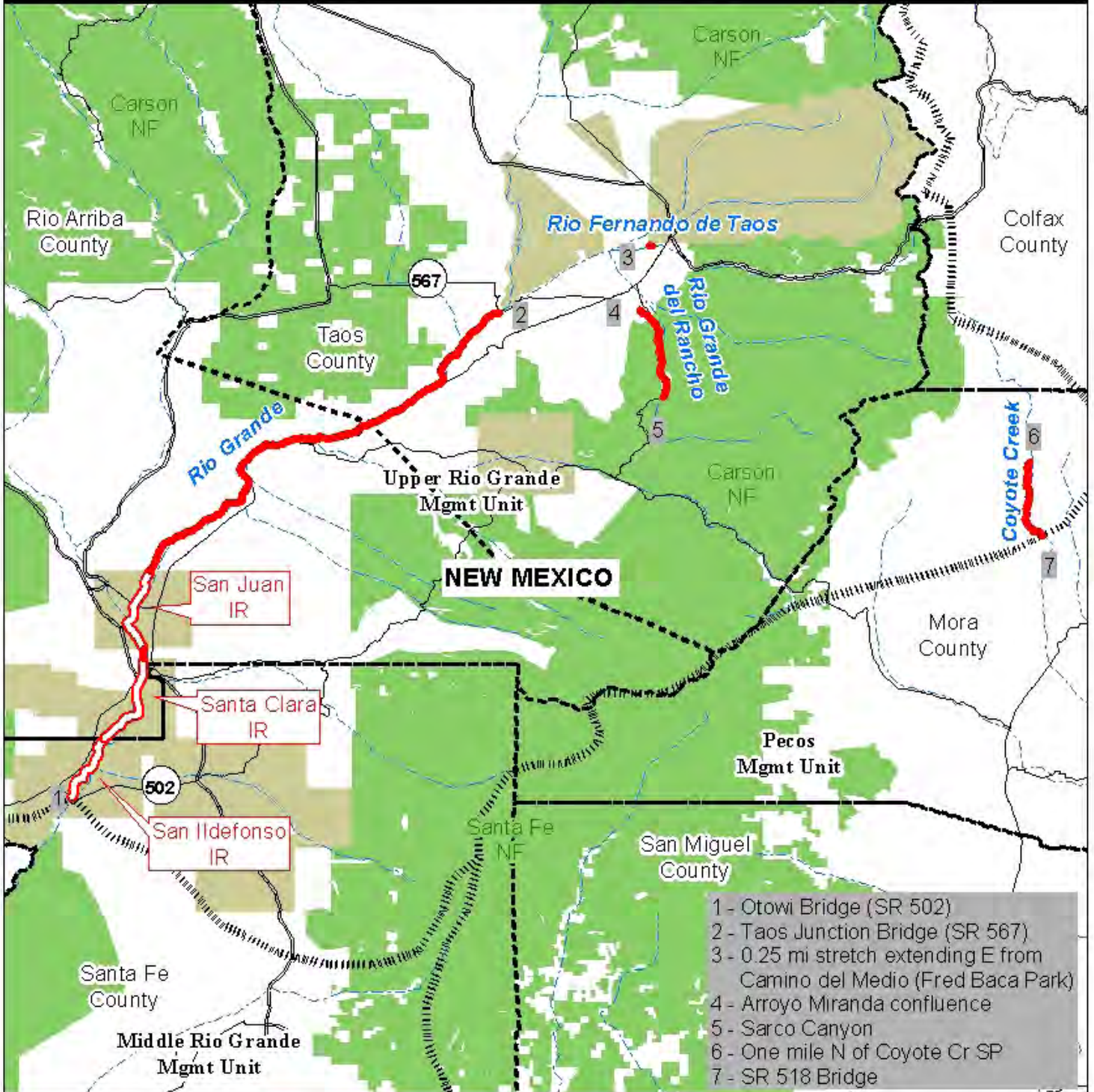
- 1 - Coolidge Dam
- 2 - Upper end of Earven Flat
- 3 - Near Duncan, AZ
- 4 - Downstream end of Middle Gila Box Canyon
- 5 - Upstream end of Middle Gila Box Canyon
- 6 - Turkey Cr confluence



- Critical Habitat
- Considered for Exclusion
- Management Units
- States
- Counties
- Cities
- Rivers
- Lakes
- Department of Defense
- Fish and Wildlife Service
- Forest Service
- National Park Service
- State
- Tribal

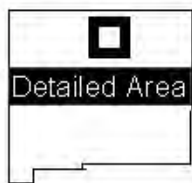


### General Locations of Critical Habitat for the Southwestern Willow Flycatcher Upper Rio Grande Management Unit



- 1 - Otowi Bridge (SR 502)
- 2 - Taos Junction Bridge (SR 567)
- 3 - 0.25 mi stretch extending E from Camino del Medio (Fred Baca Park)
- 4 - Arroyo Miranda confluence
- 5 - Sarco Canyon
- 6 - One mile N of Coyote Cr SP
- 7 - SR 518 Bridge

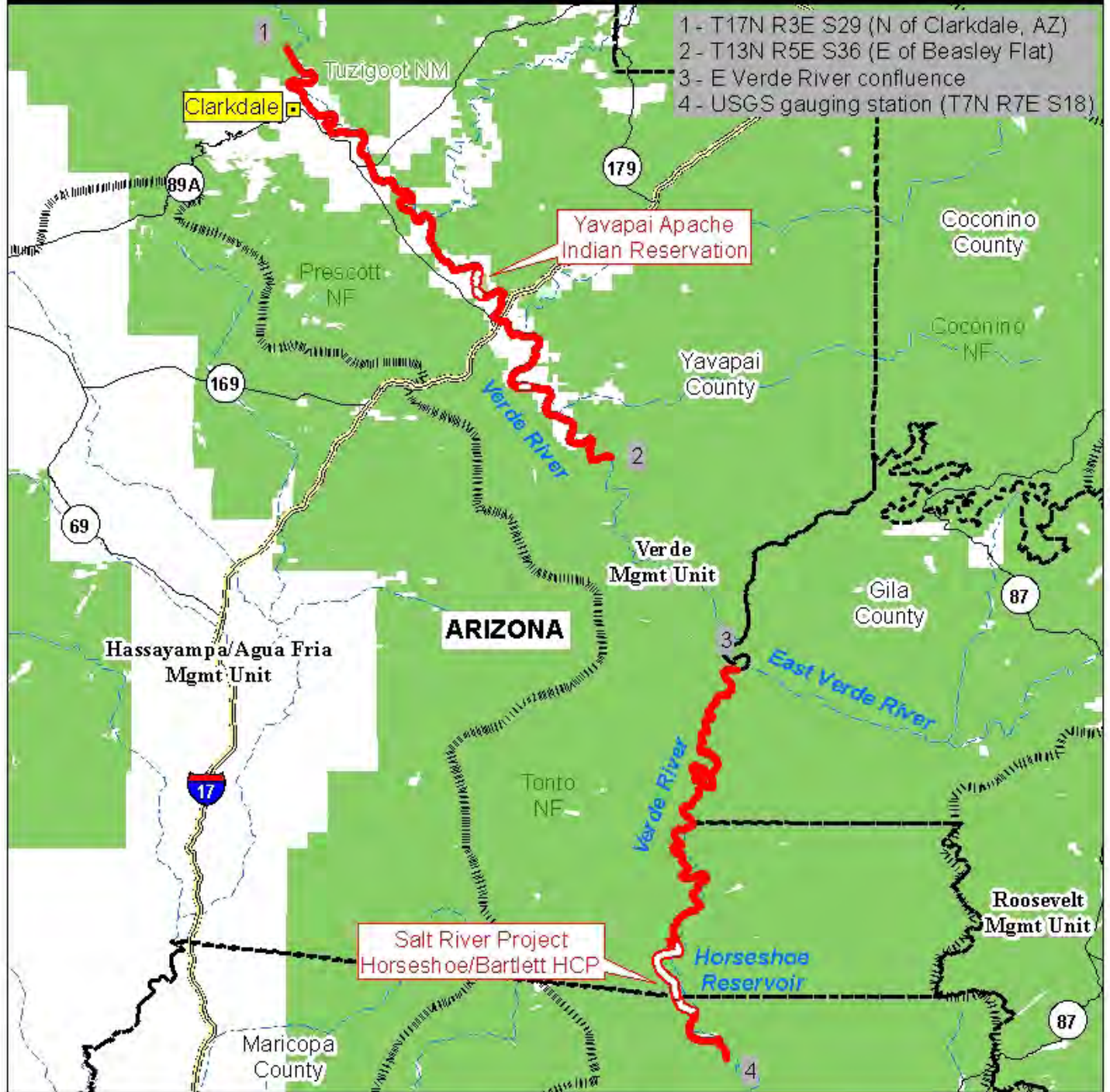
**NEW MEXICO**



- |                          |                           |
|--------------------------|---------------------------|
| Critical Habitat         | Department of Defense     |
| Considered for Exclusion | Fish and Wildlife Service |
| Management Units         | Forest Service            |
| Counties                 | National Park Service     |
| US Highways              | State                     |
| State Highways           | Tribal                    |
| Rivers                   |                           |



## General Locations of Critical Habitat for the Southwestern Willow Flycatcher Verde Management Unit

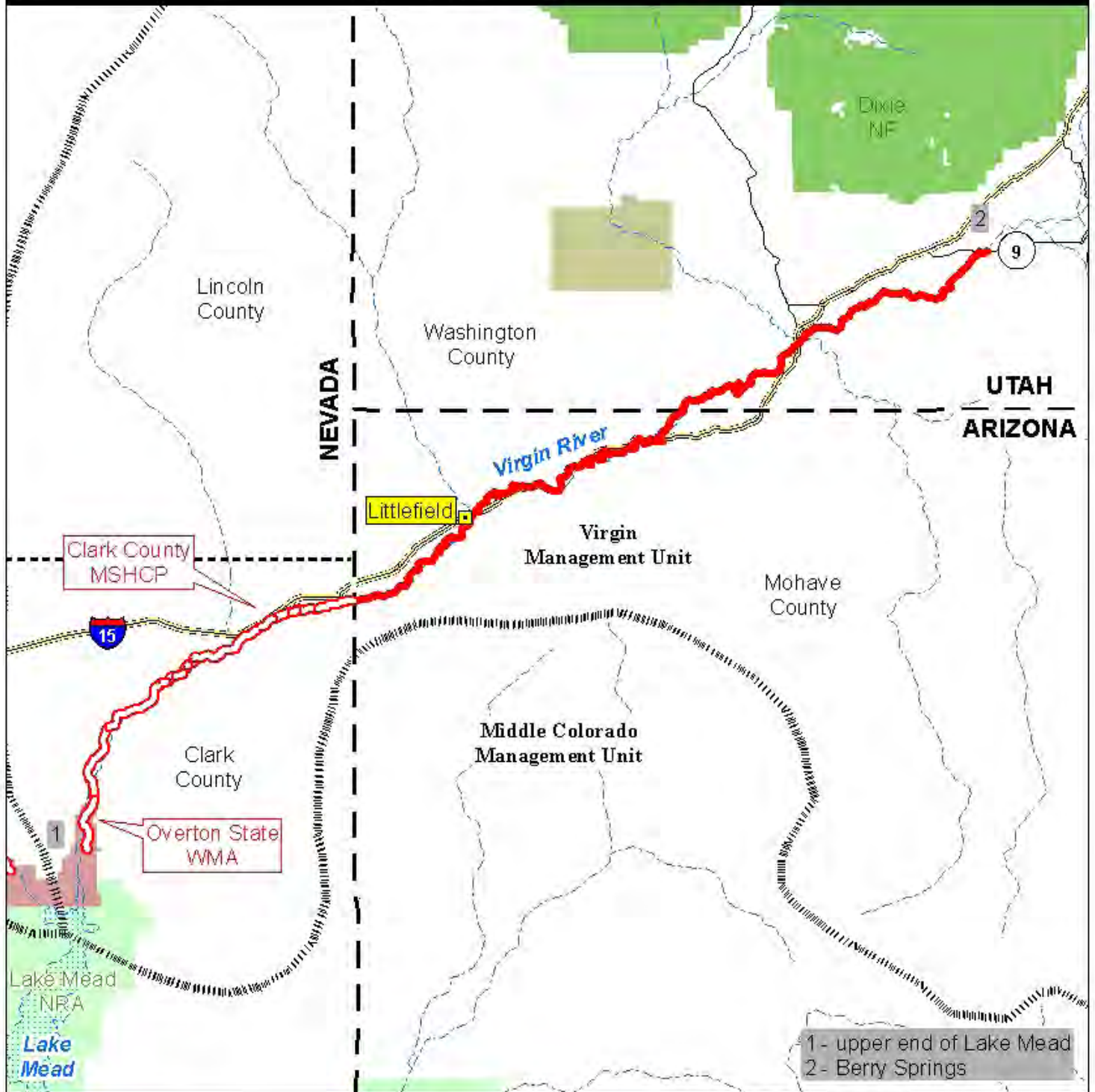


- 1 - T17N R3E S29 (N of Clarkdale, AZ)
- 2 - T13N R5E S36 (E of Beasley Flat)
- 3 - E Verde River confluence
- 4 - USGS gauging station (T7N R7E S18)



- |                          |                           |
|--------------------------|---------------------------|
| Critical Habitat         | Lakes                     |
| Considered for Exclusion | Department of Defense     |
| Management Units         | Fish and Wildlife Service |
| Counties                 | Forest Service            |
| Cities                   | National Park Service     |
| Interstates              | State                     |
| State Highways           | Tribal                    |
| Rivers                   |                           |

## General Locations of Critical Habitat for the Southwestern Willow Flycatcher Virgin Management Unit



1 - upper end of Lake Mead  
2 - Berry Springs



- |                          |                           |
|--------------------------|---------------------------|
| Critical Habitat         | Rivers                    |
| Considered for Exclusion | Lakes                     |
| Management Units         | Department of Defense     |
| States                   | Fish and Wildlife Service |
| Counties                 | Forest Service            |
| Cities                   | National Park Service     |
| Interstates              | State                     |
| State Highways           | Tribal                    |

